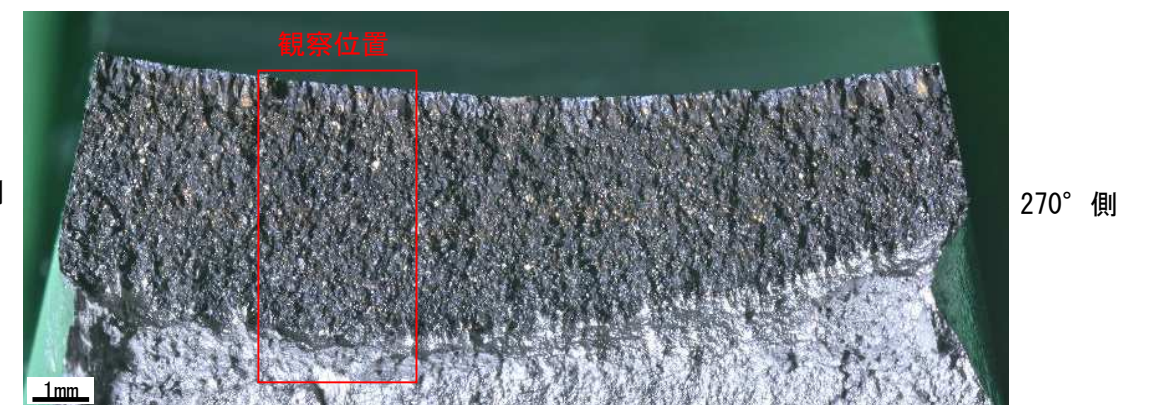


A 矢視 (エルボ側) 破面外観



A 矢視 (エルボ側) 破面外観

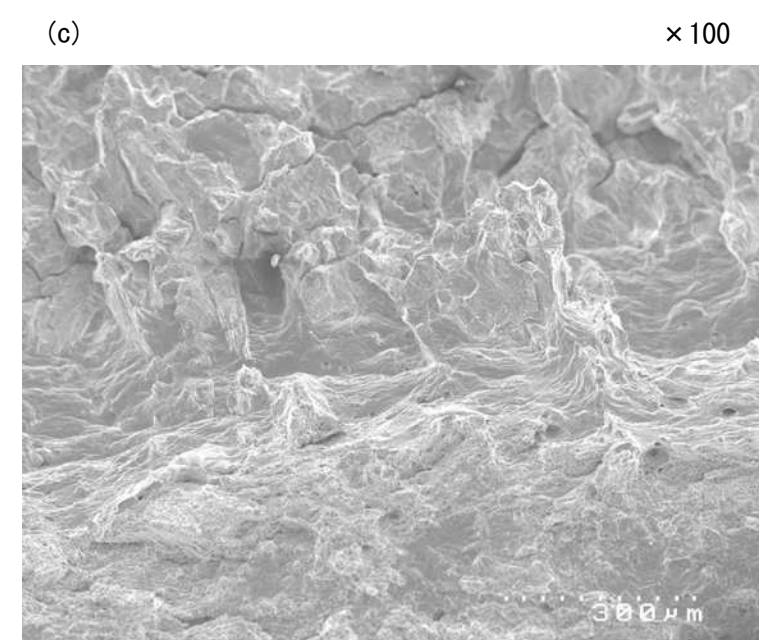
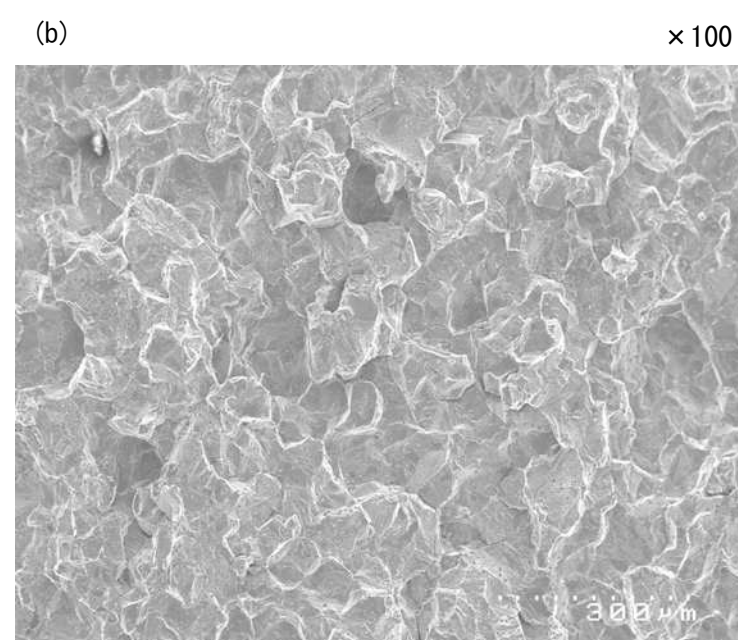
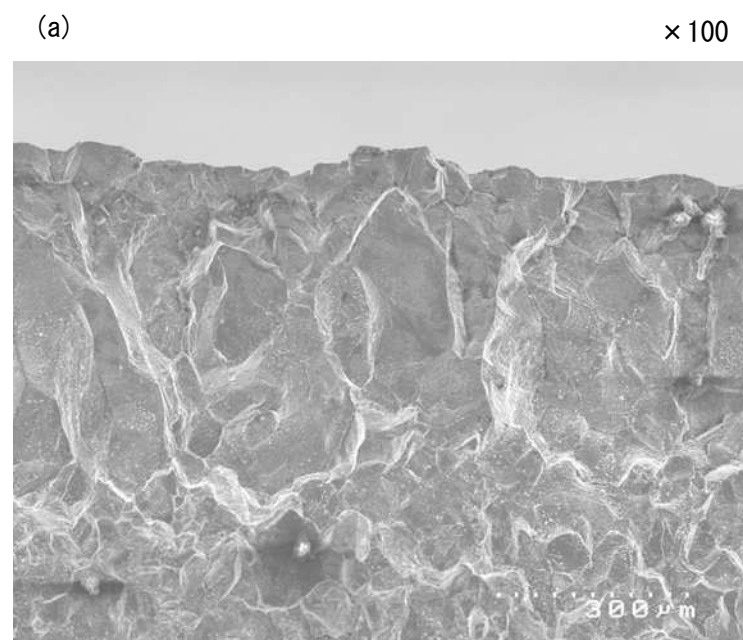


図1 加圧器スプレライン配管 当該管 SEM 破面観察結果 (サンプルT-②-a A矢視)

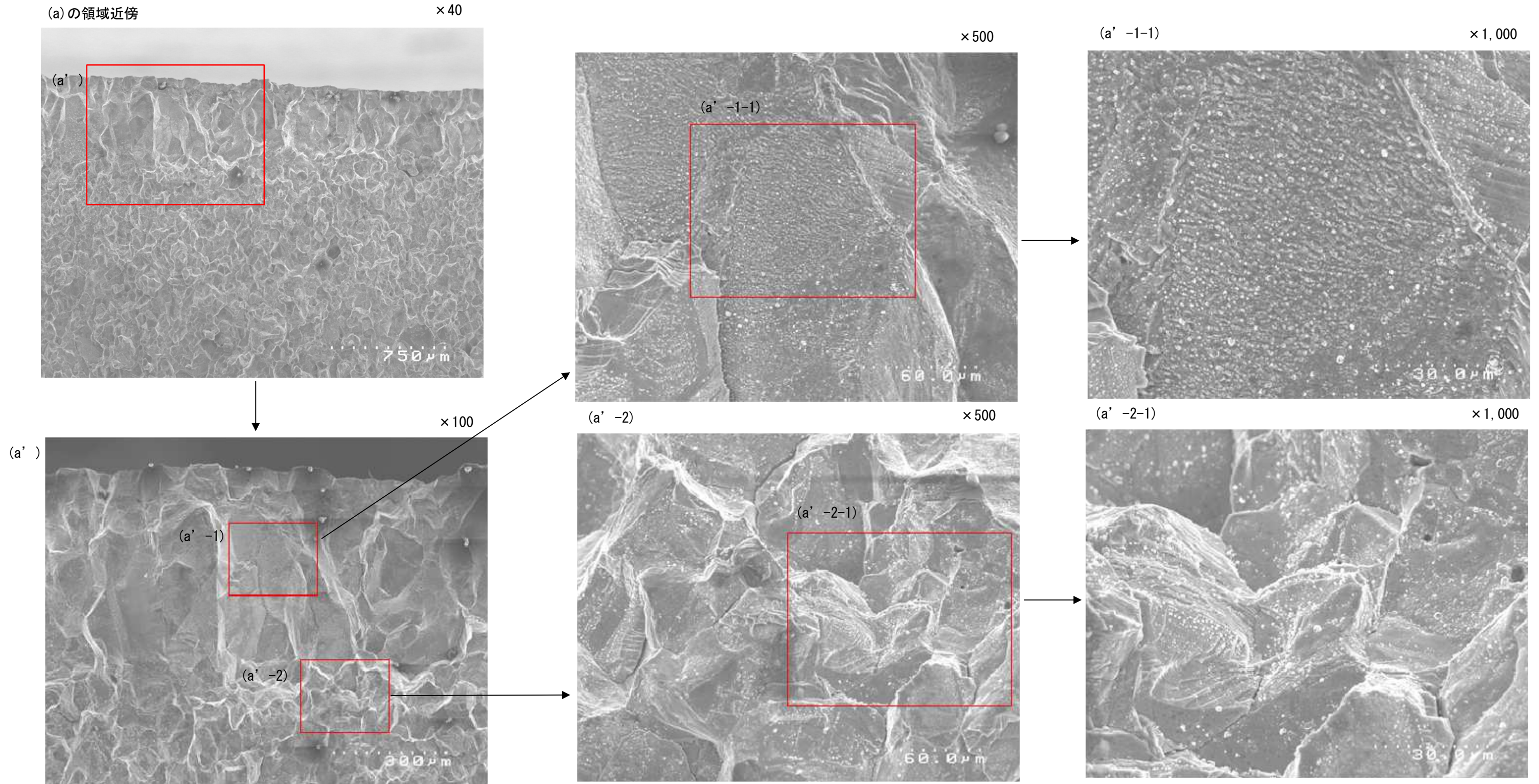
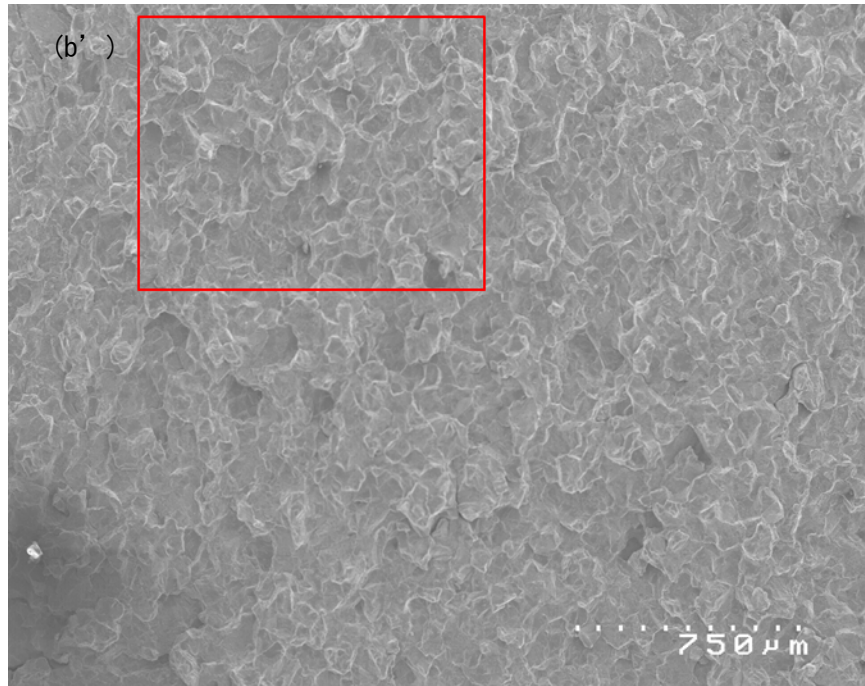


図2 加圧器スプレイライン配管 当該管 SEM 破面観察結果 (サンプルT-②-a A矢視 高倍視野①)

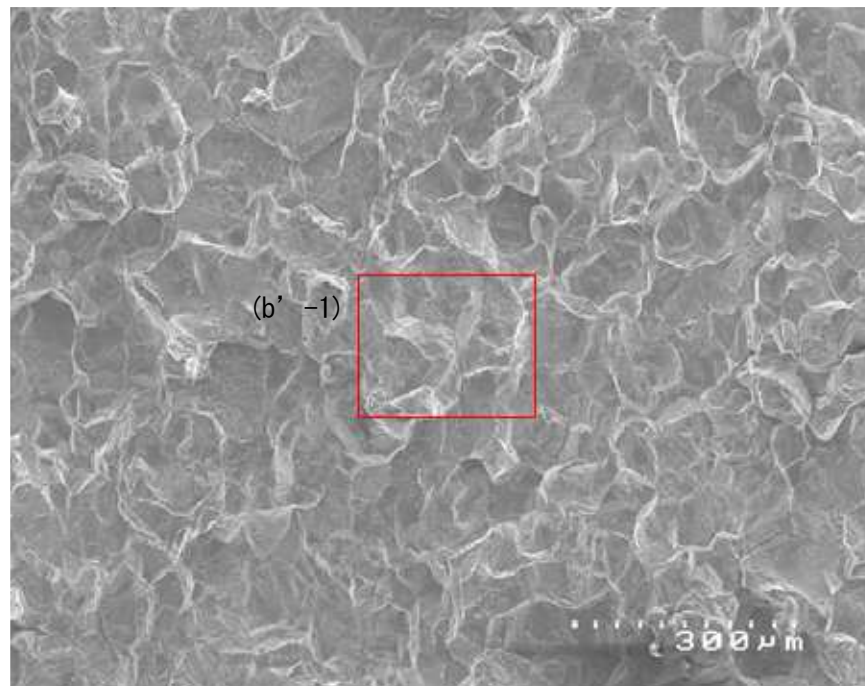
(b) の領域近傍

× 40



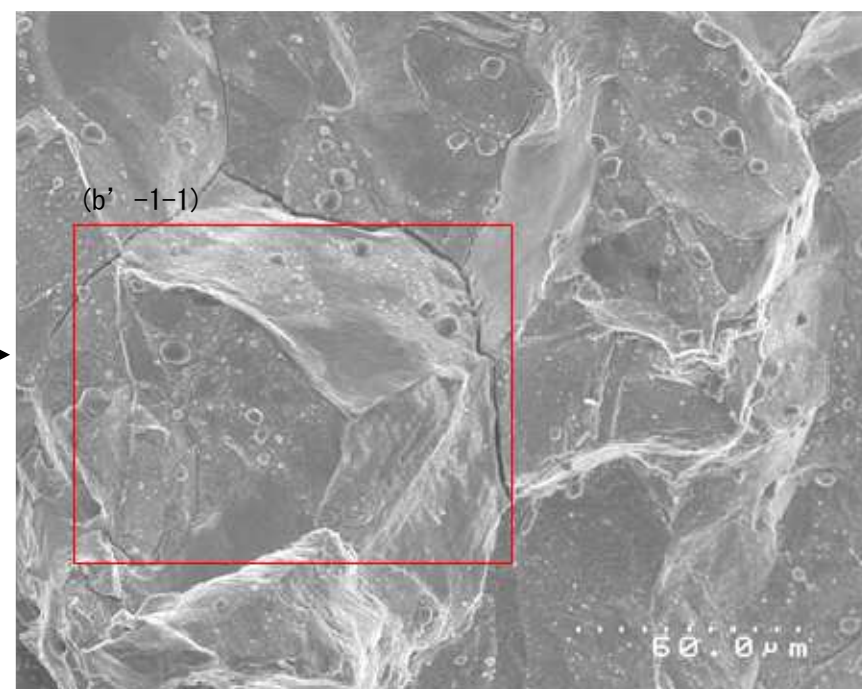
(b')

× 100



(b'-1)

× 500



(b'-1-1)

× 1,000

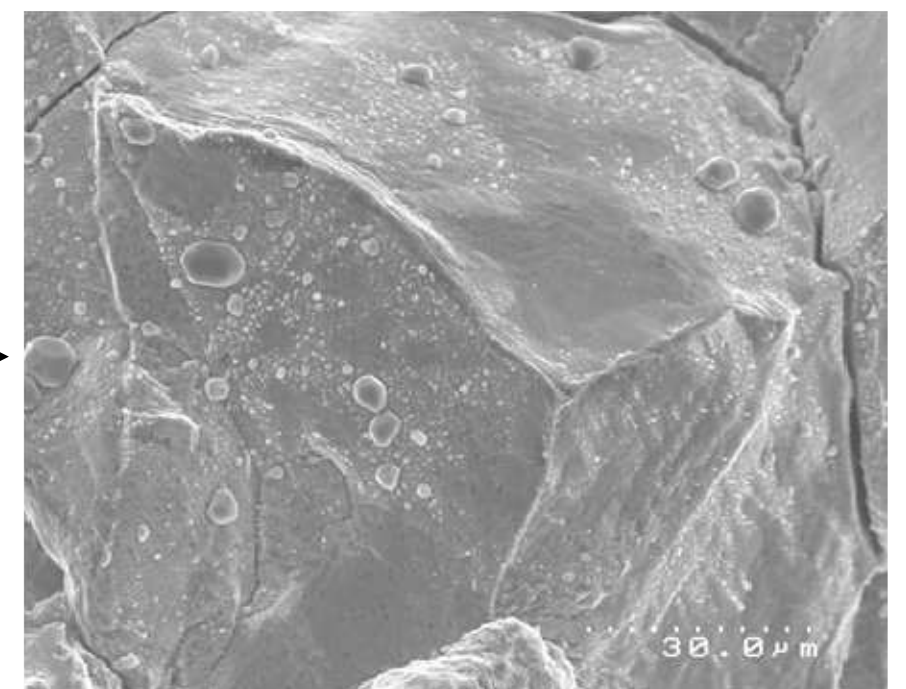


図3 加圧器スプレライン配管 当該管 SEM破面観察結果 (サンプルT-②-a A矢視 高倍視野②)

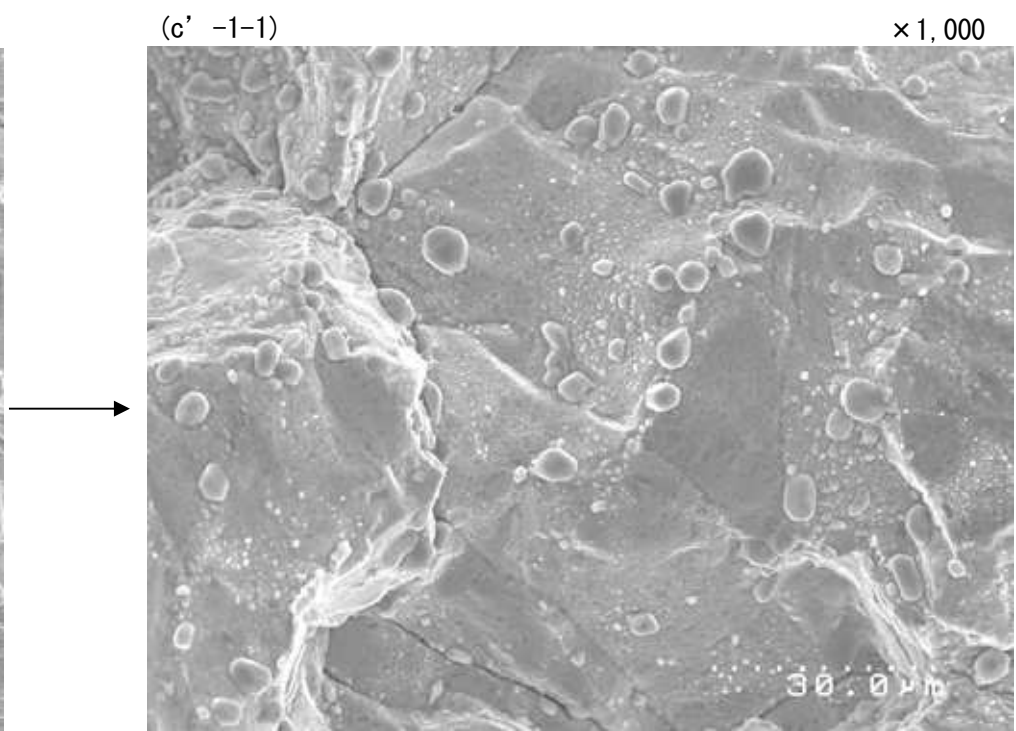
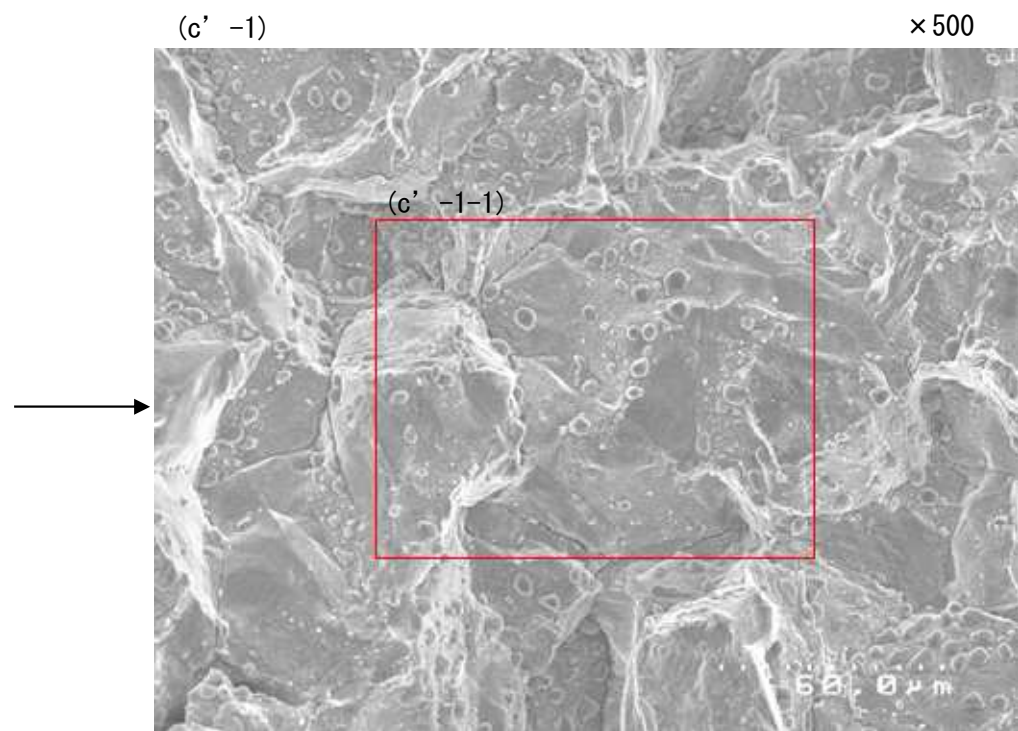
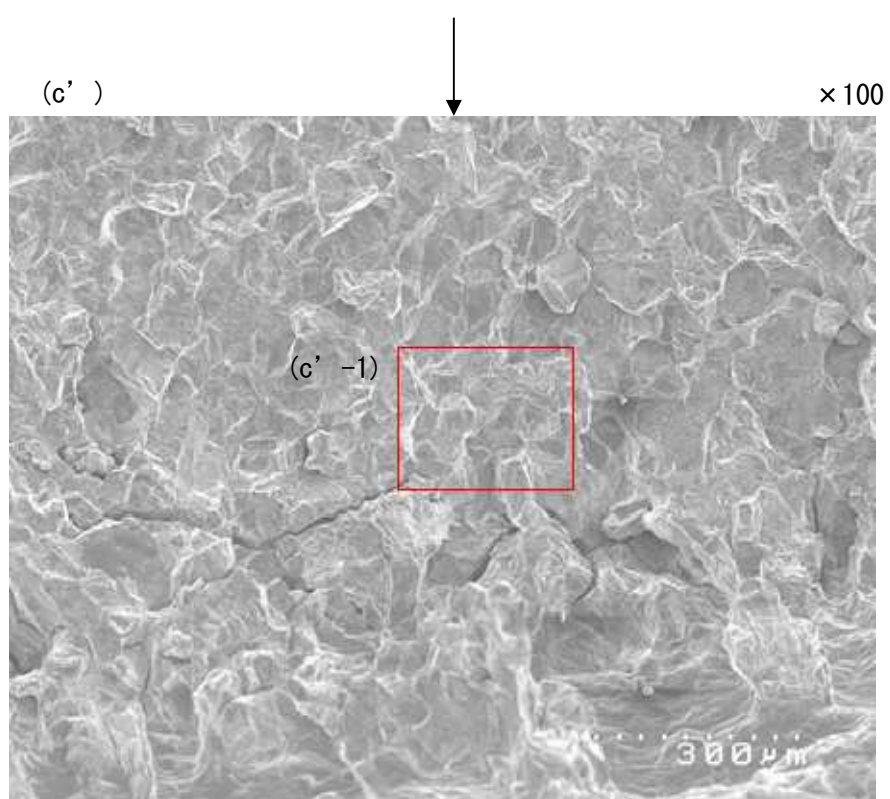
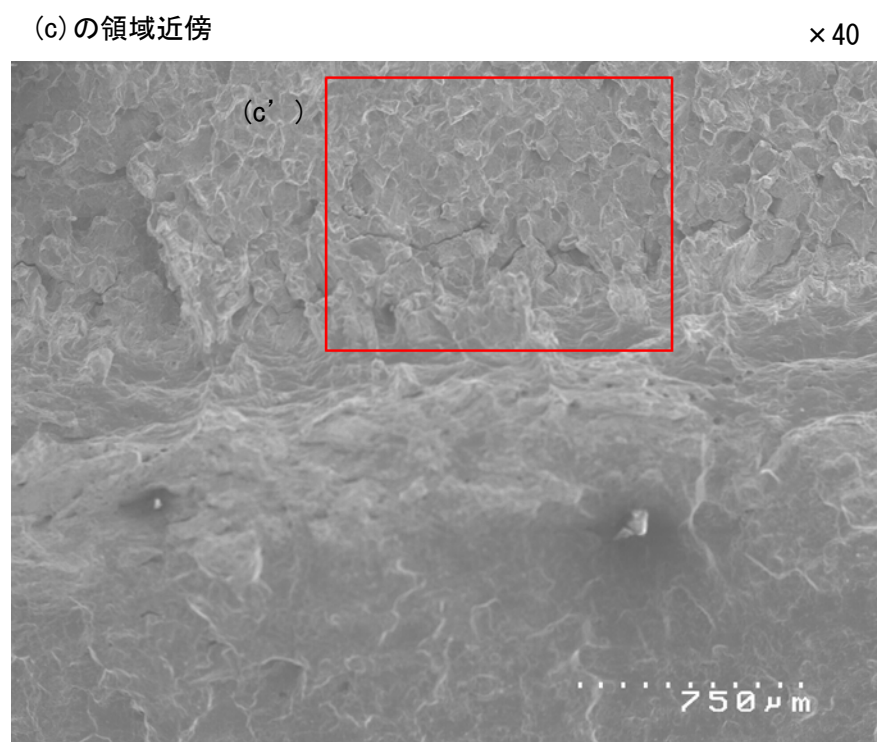
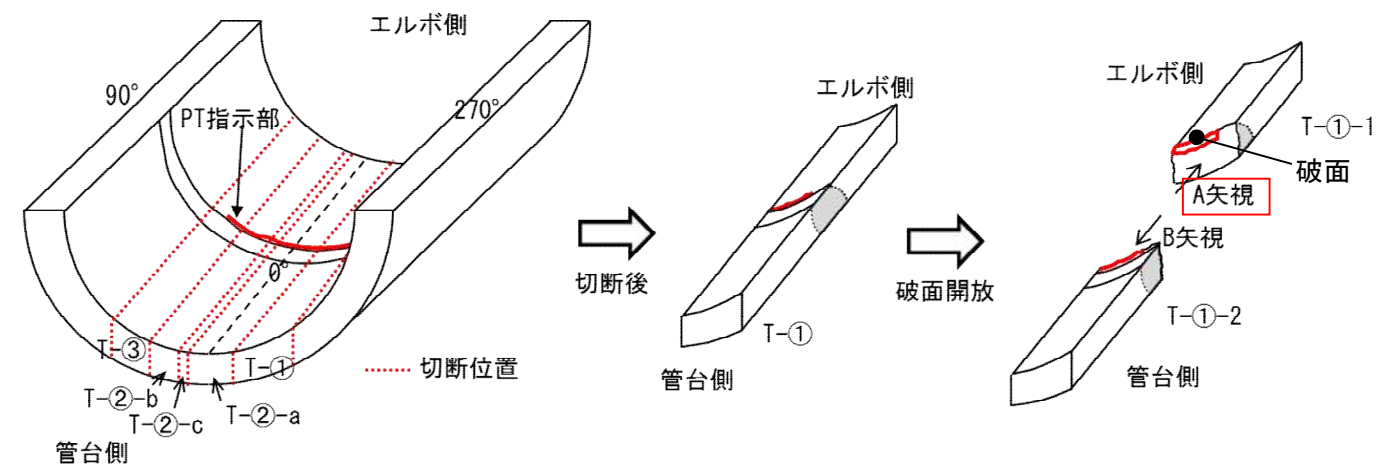
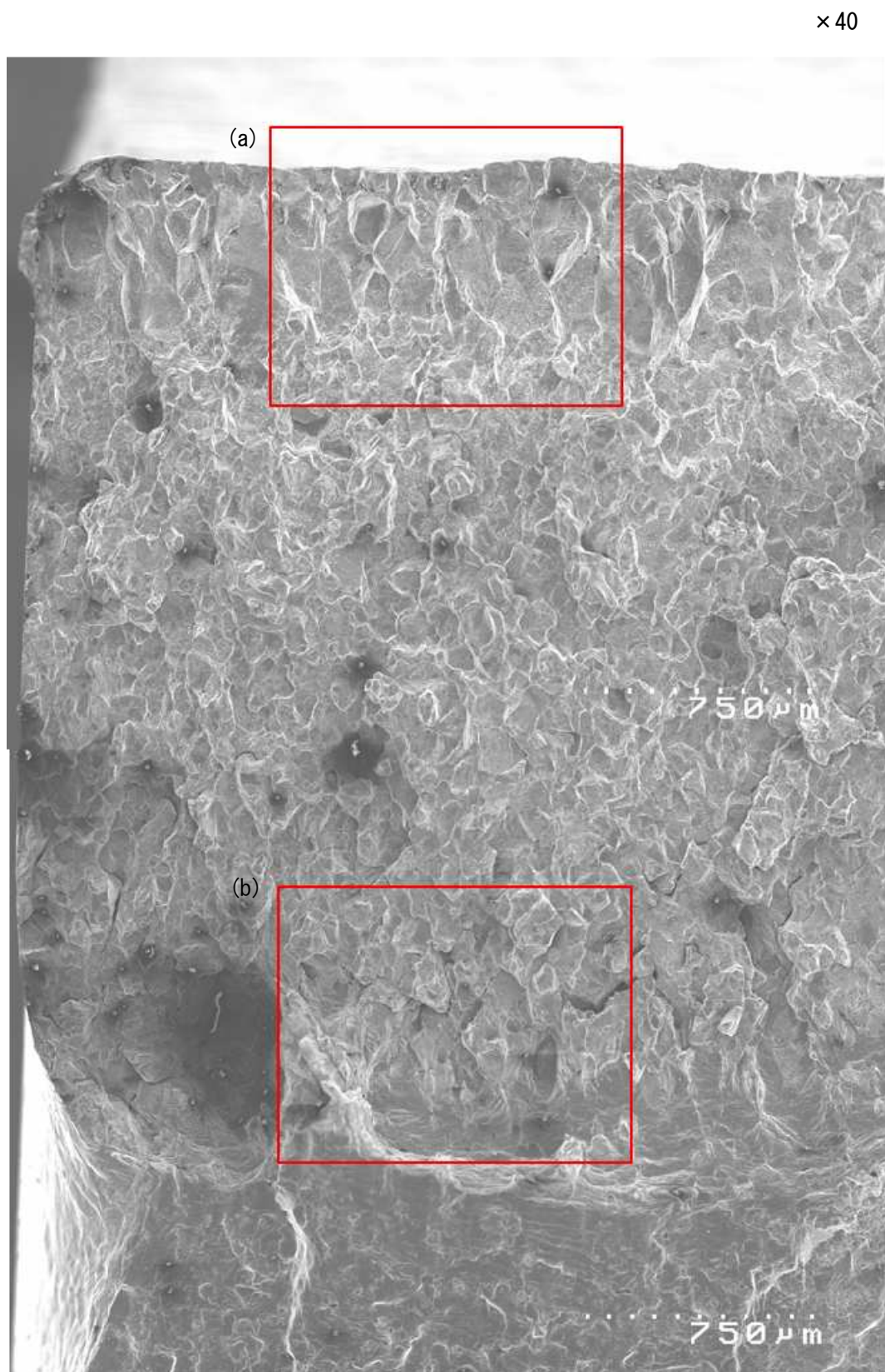


図4 加圧器スプレイライン配管 当該管 SEM 破面観察結果 (サンプルT-②-a A矢視 高倍視野③)



A 矢視 (エルボ側) 破面外観

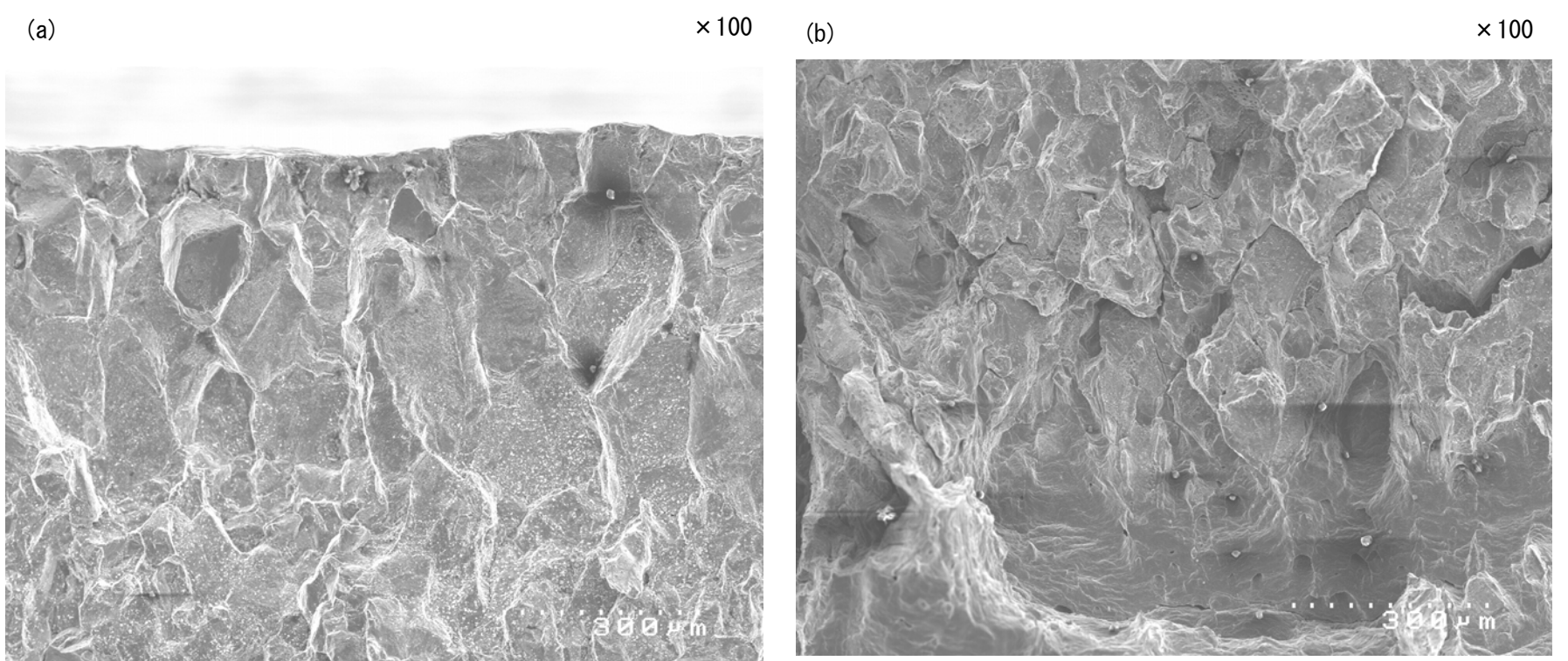


図5 加圧器スプレイライン配管 当該管 SEM 破面観察結果 (T-① A 矢視 視野①)

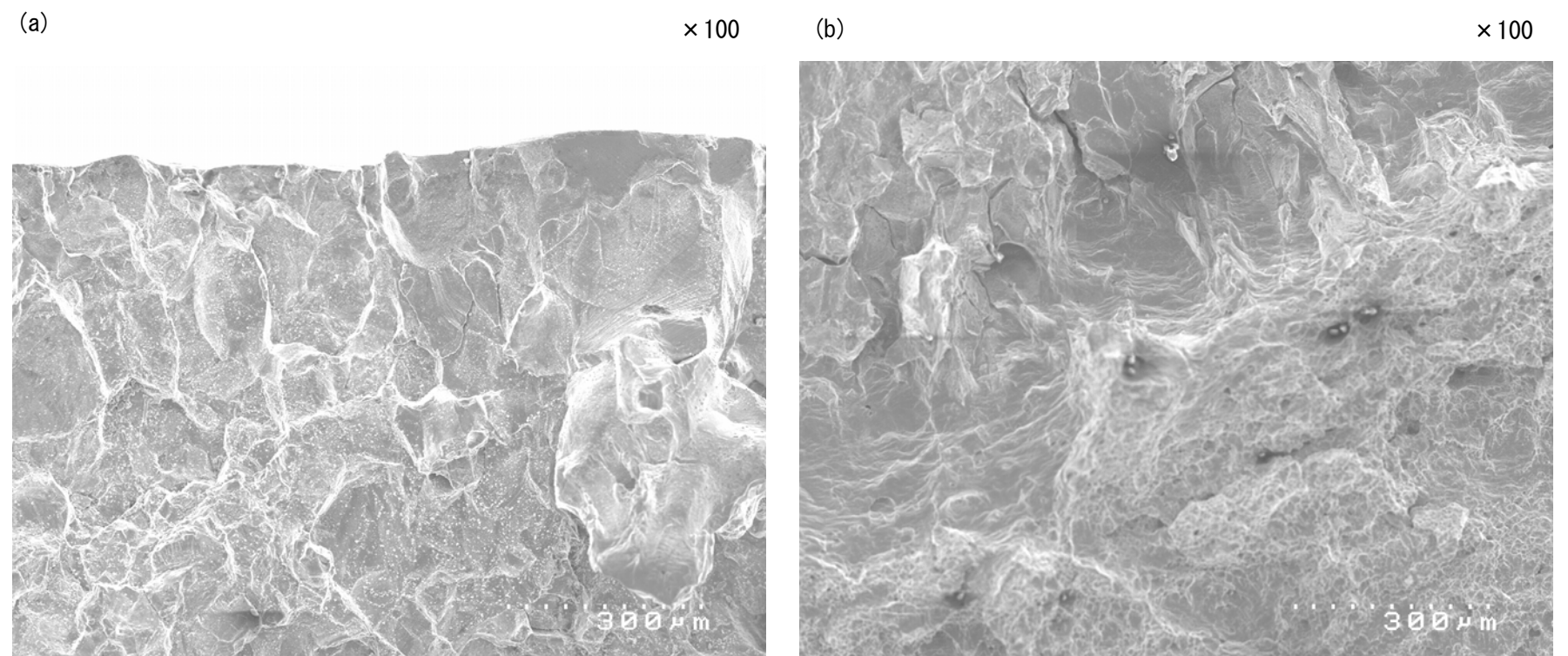
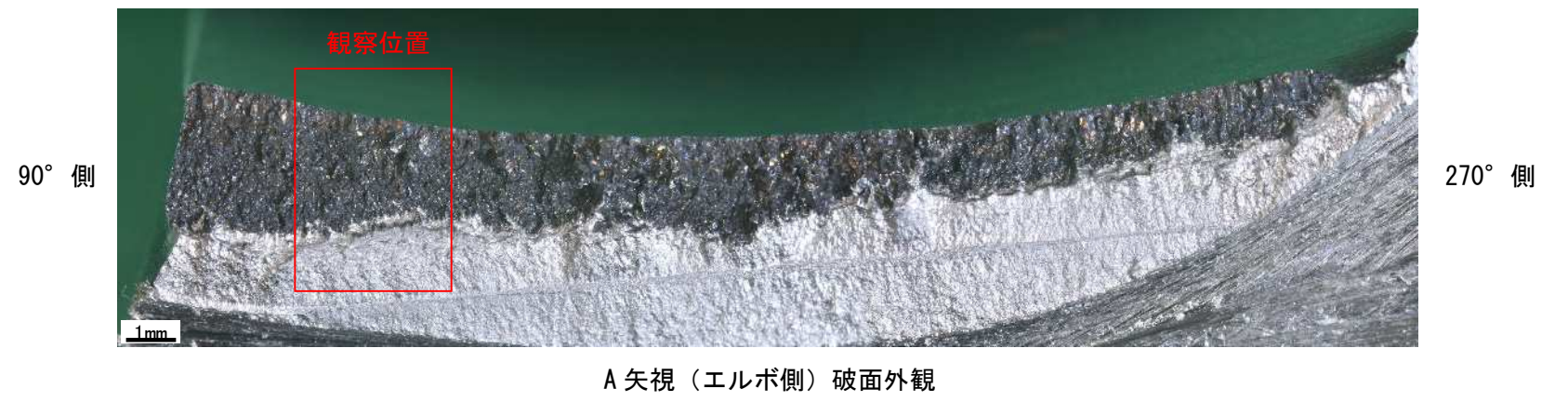
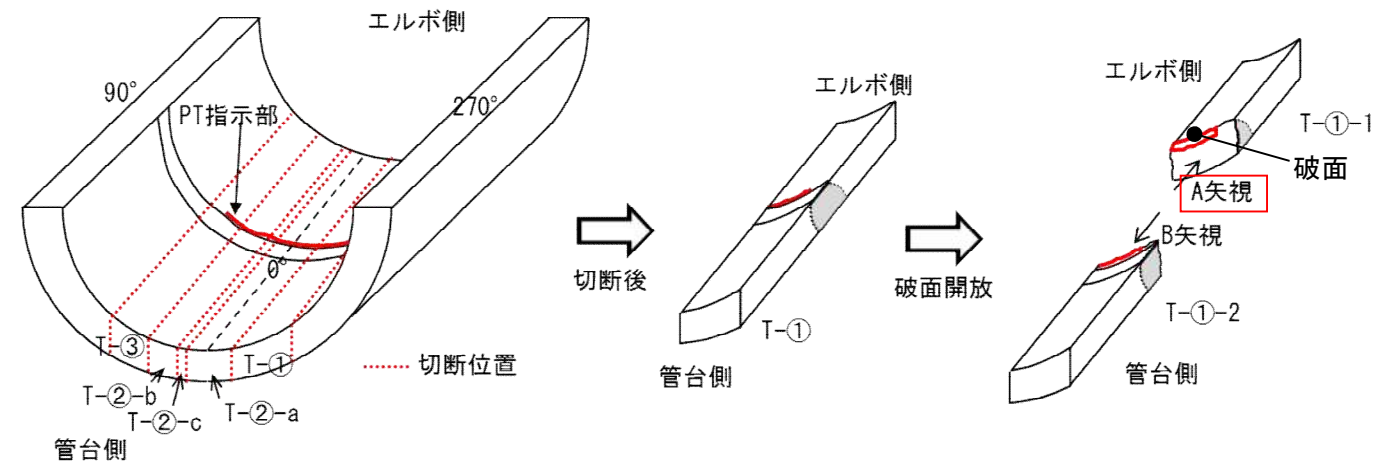
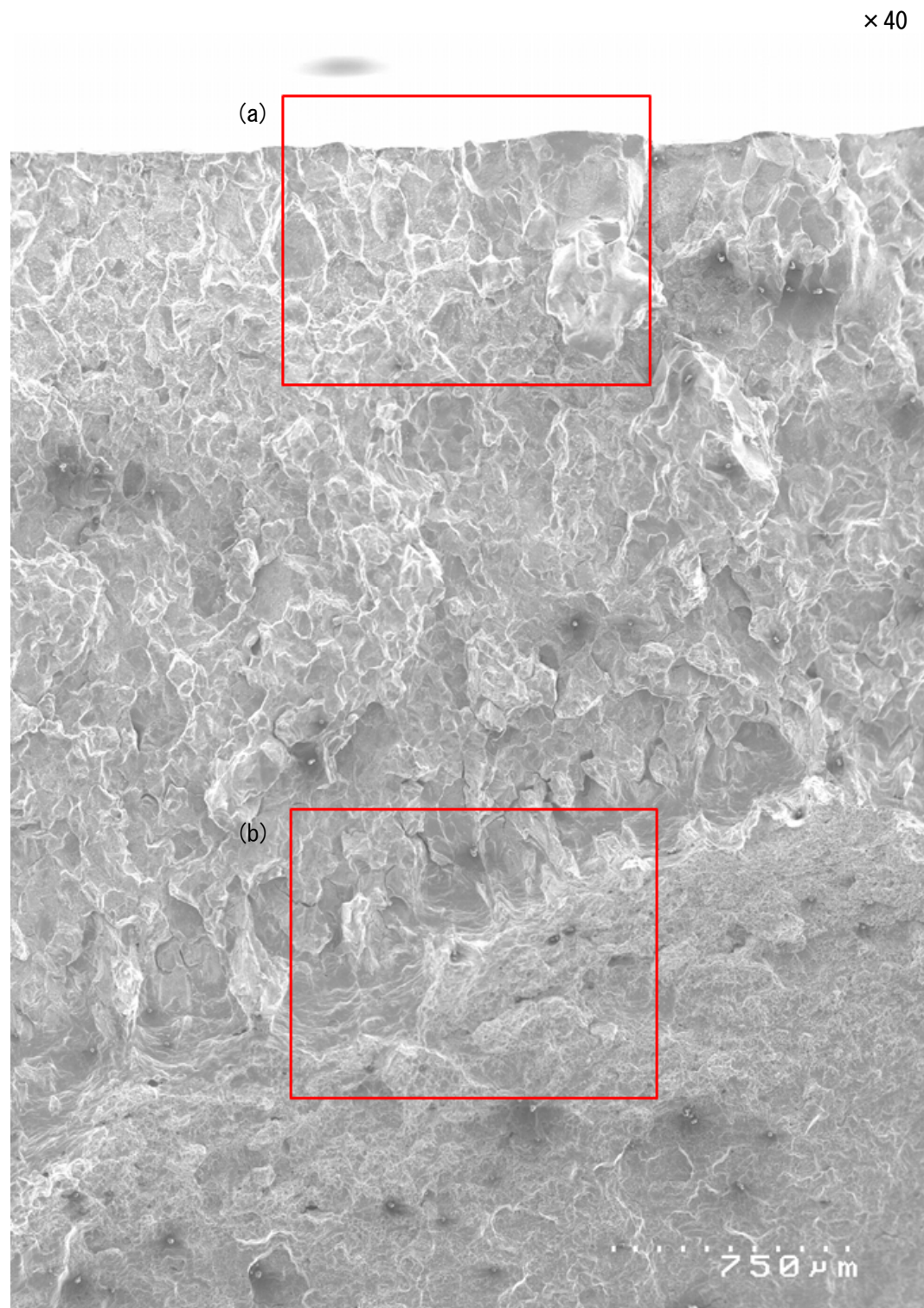
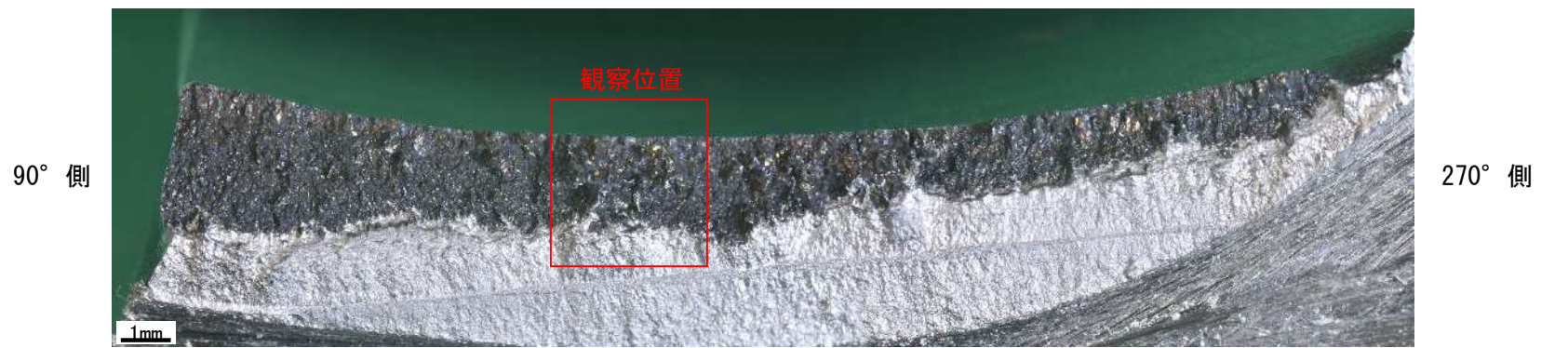
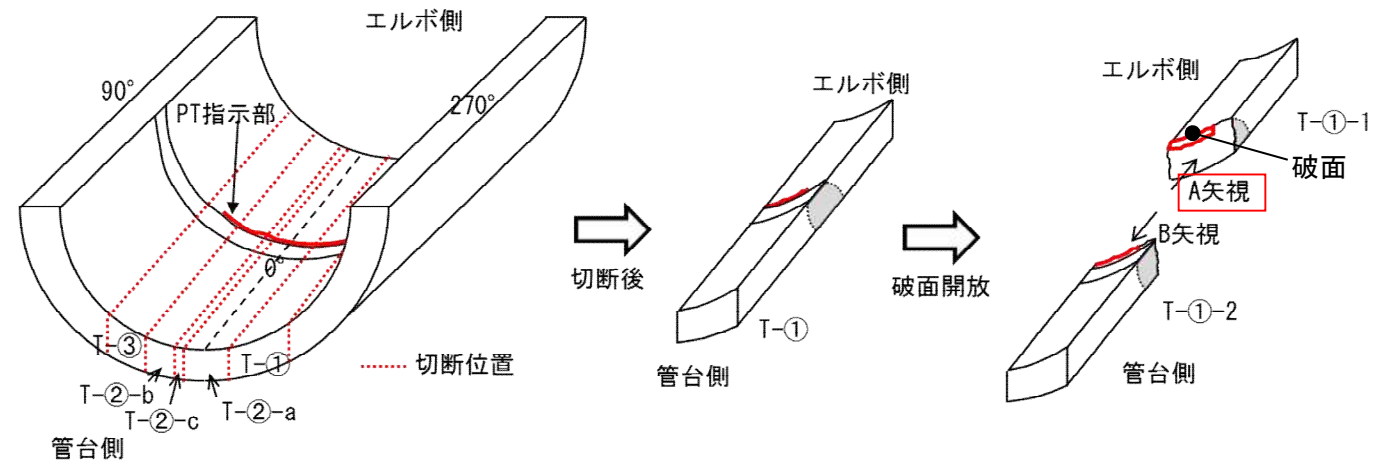
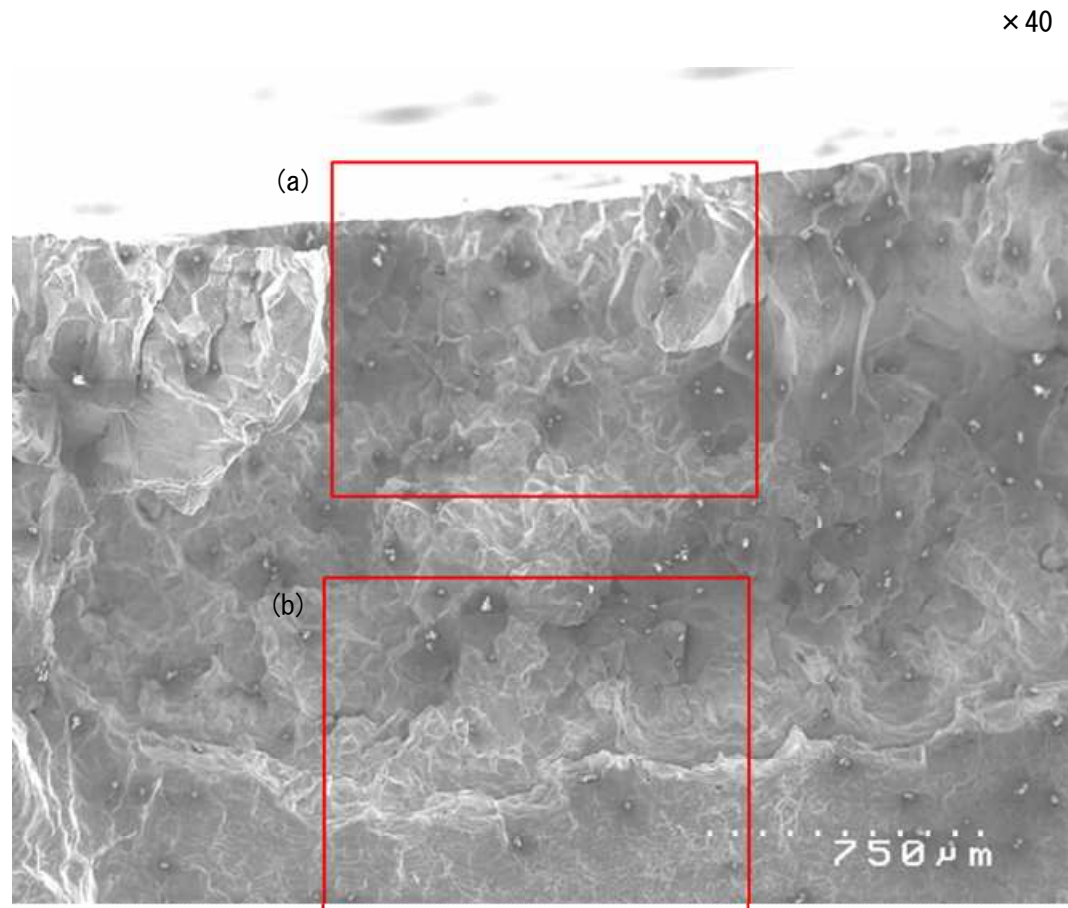


図6 加圧器スプレイライン配管 当該管 SEM破面観察結果 (T-① A矢視 視野②)



A 矢視 (エルボ側) 破面外観

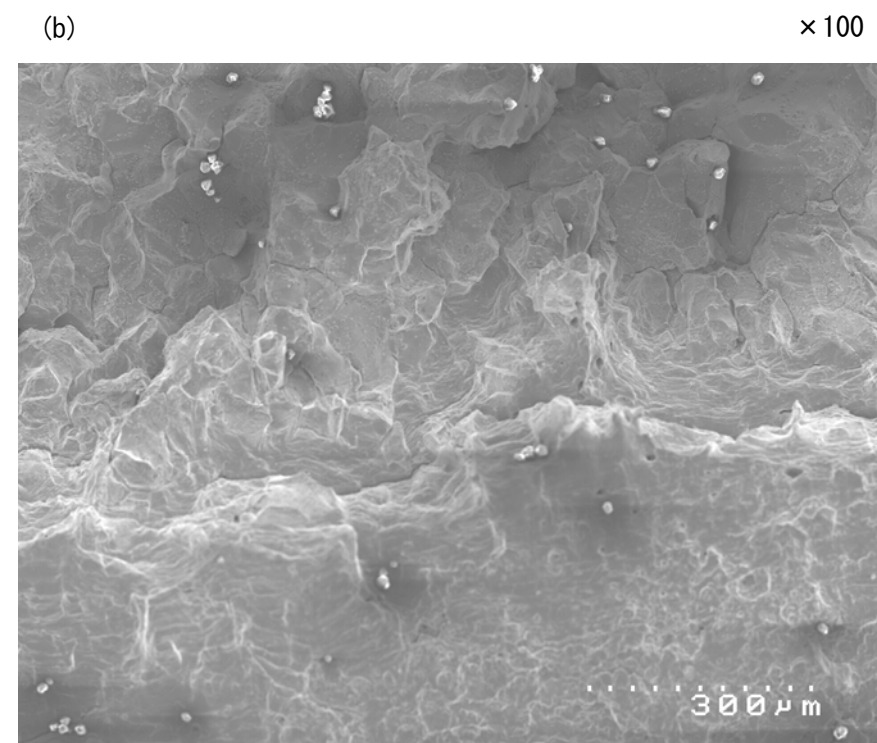
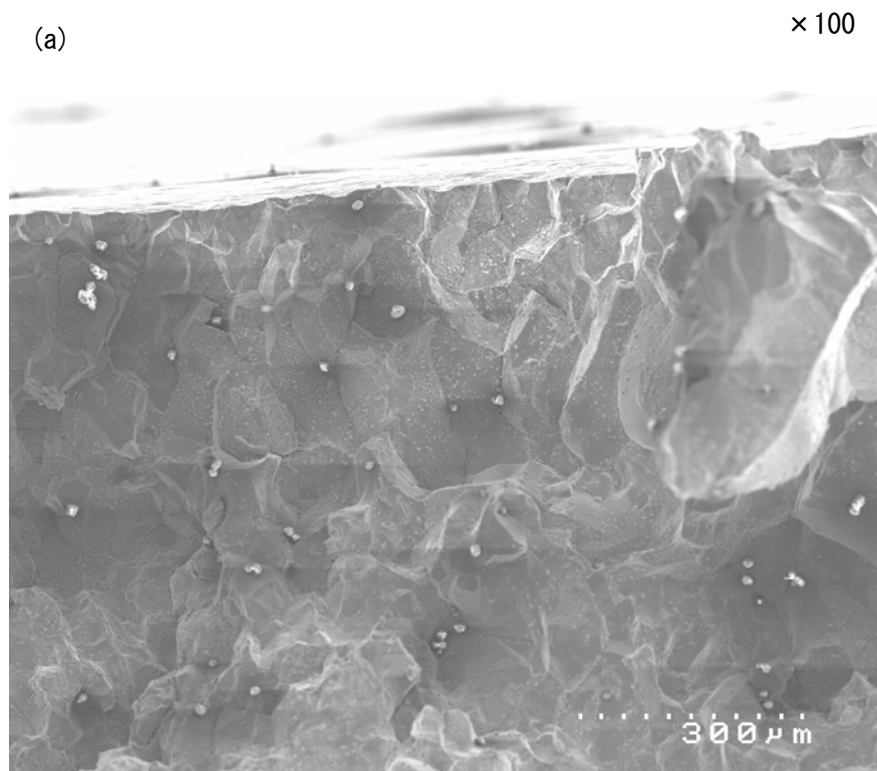


図7 加圧器スプレイライン配管 当該管 SEM 破面観察結果 (T-① A 矢視 視野③)

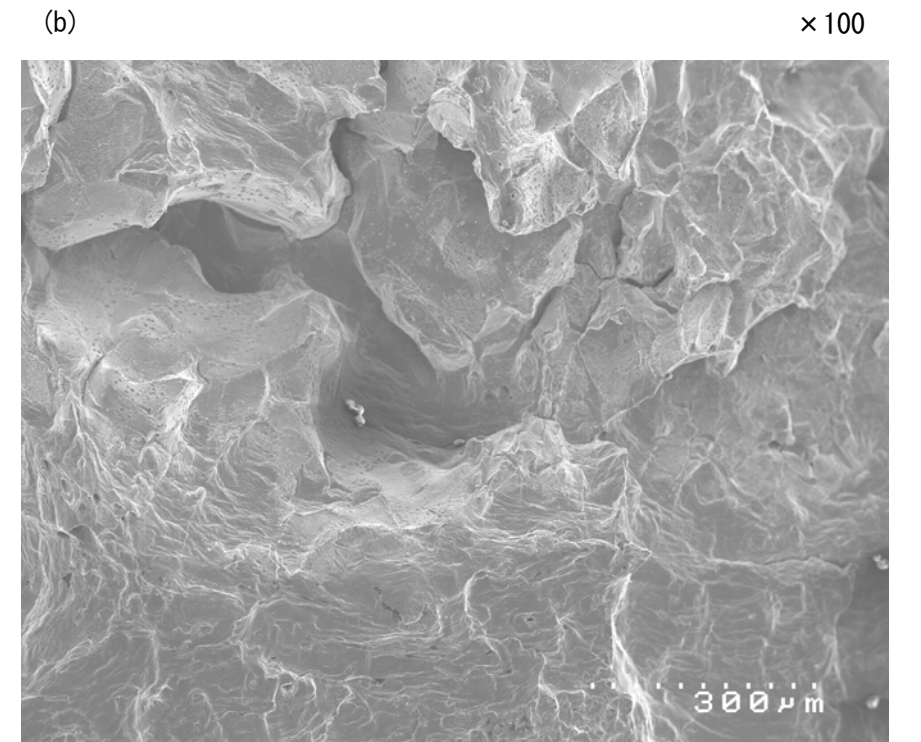
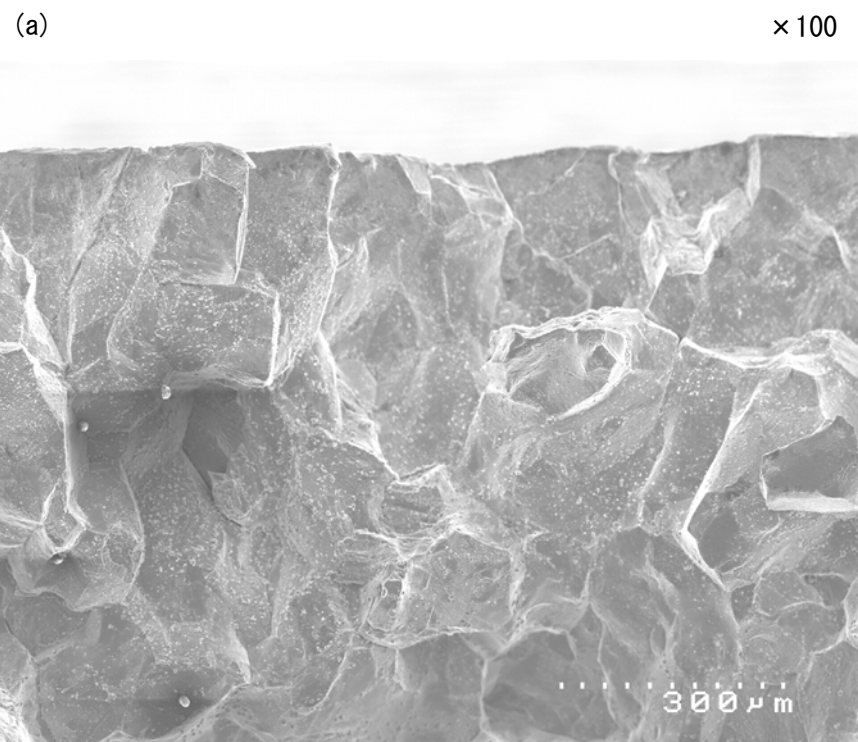
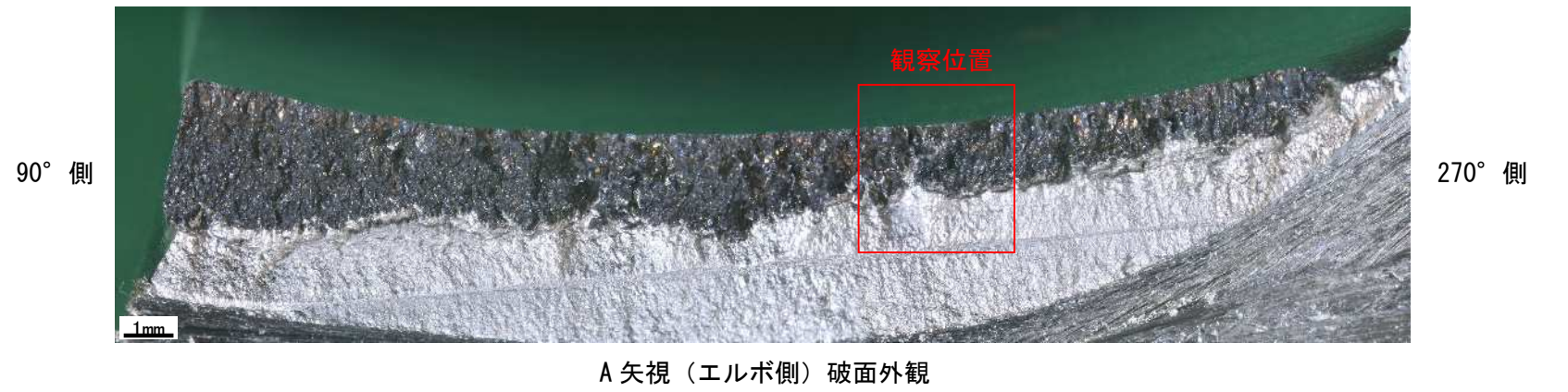
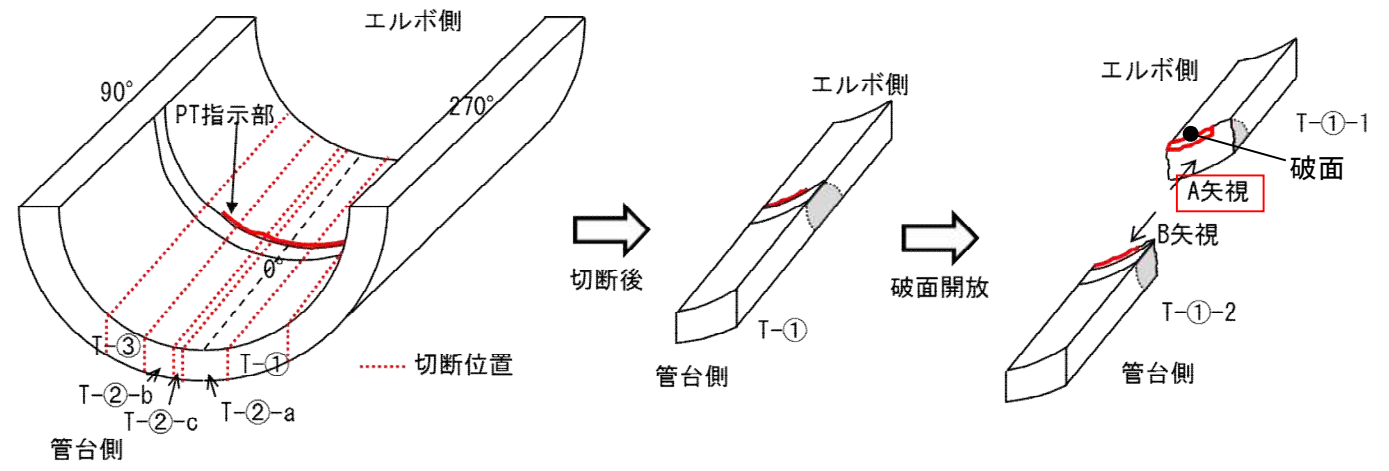
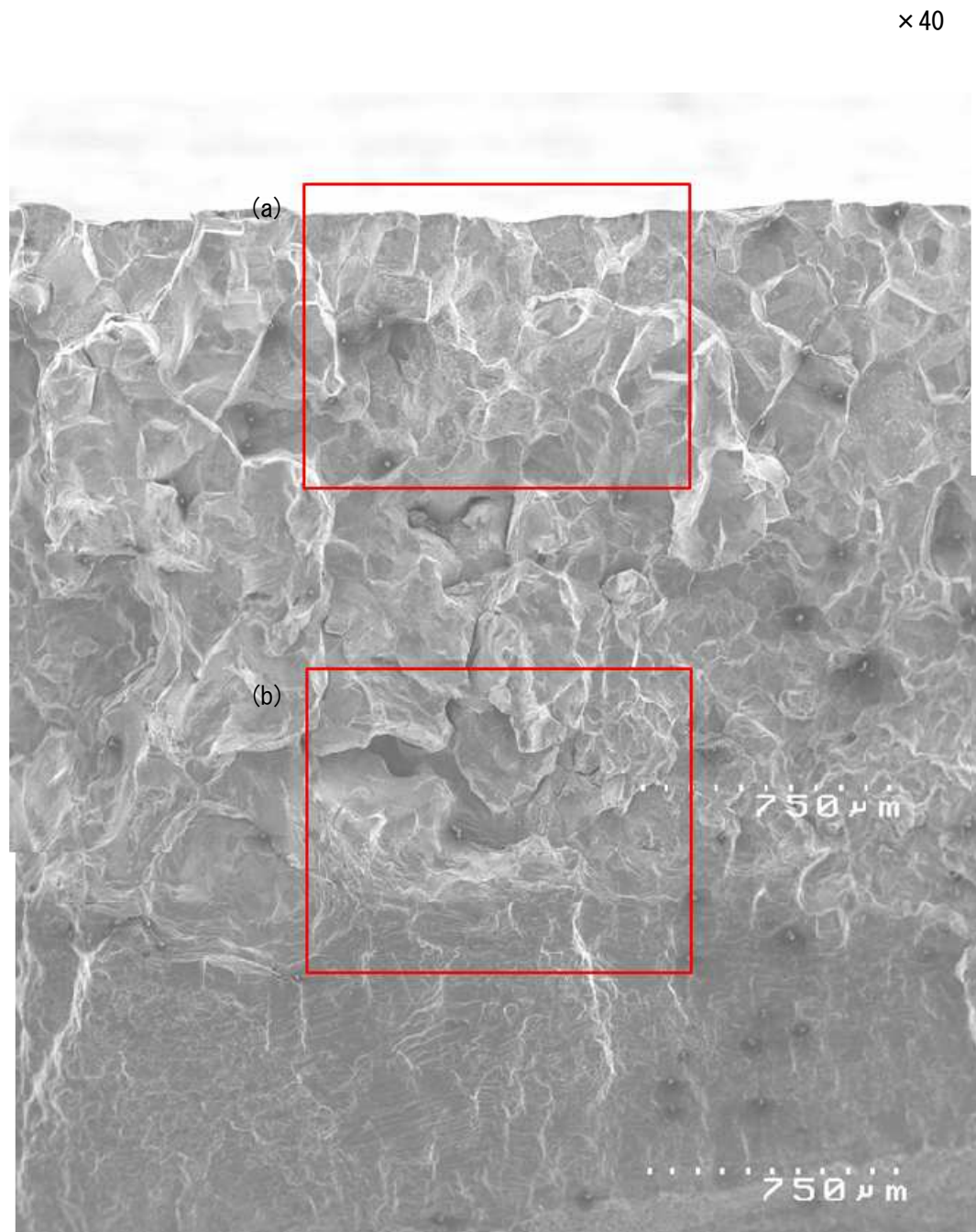
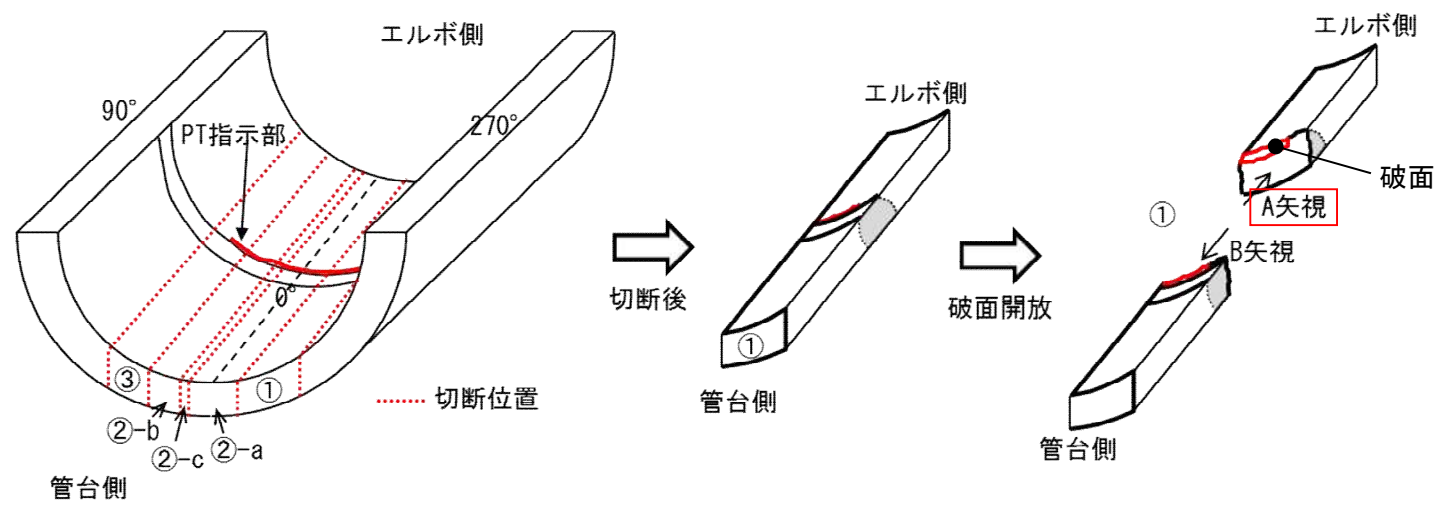
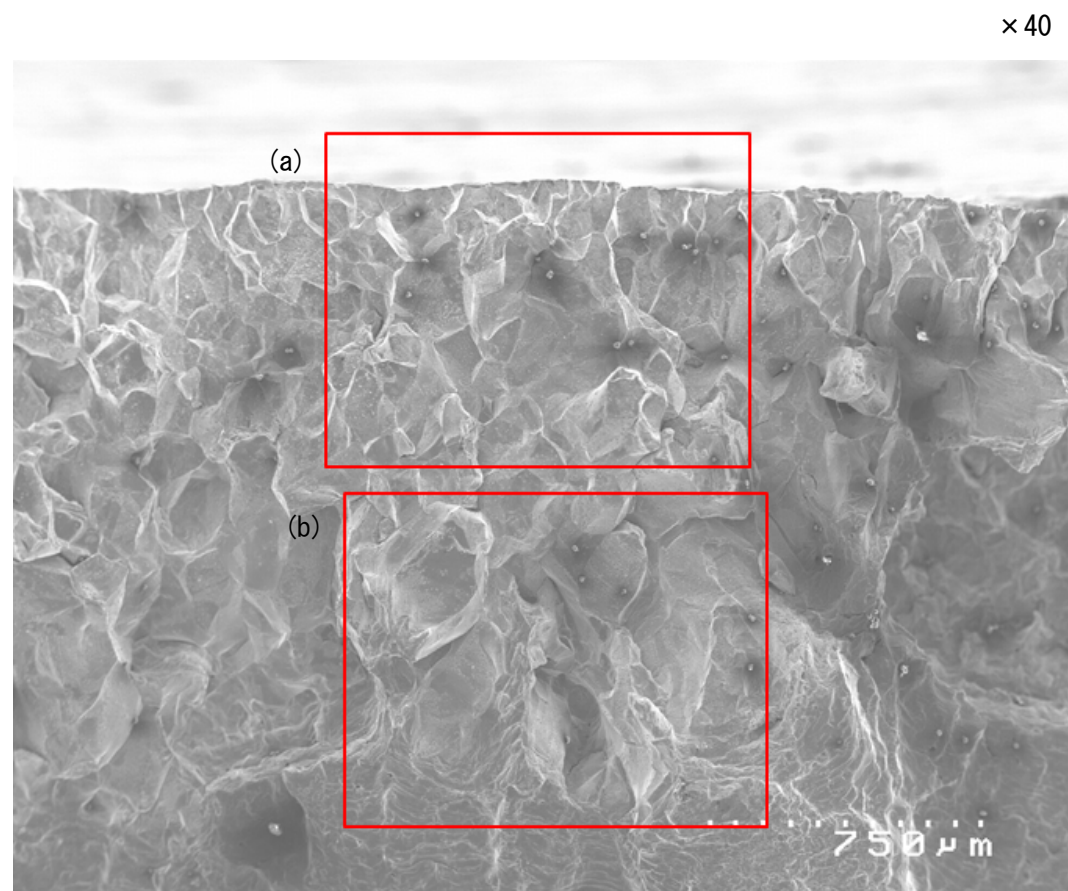


図8 加圧器スプレイライン配管 当該管 SEM 破面観察結果 (T-1 A矢視 視野④)





A 矢視 (エルボ側) 破面外観

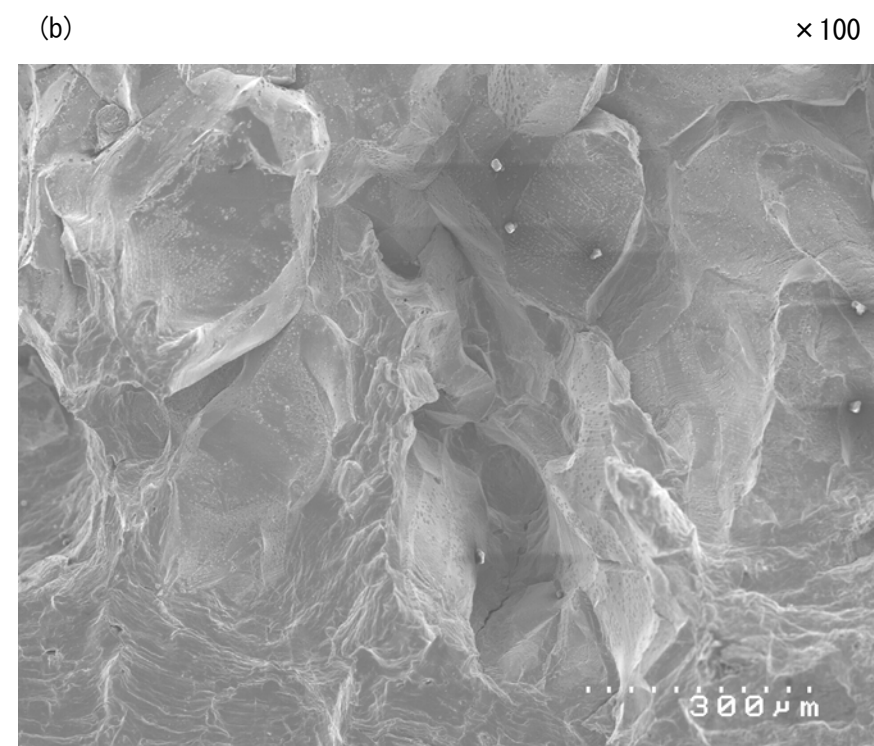
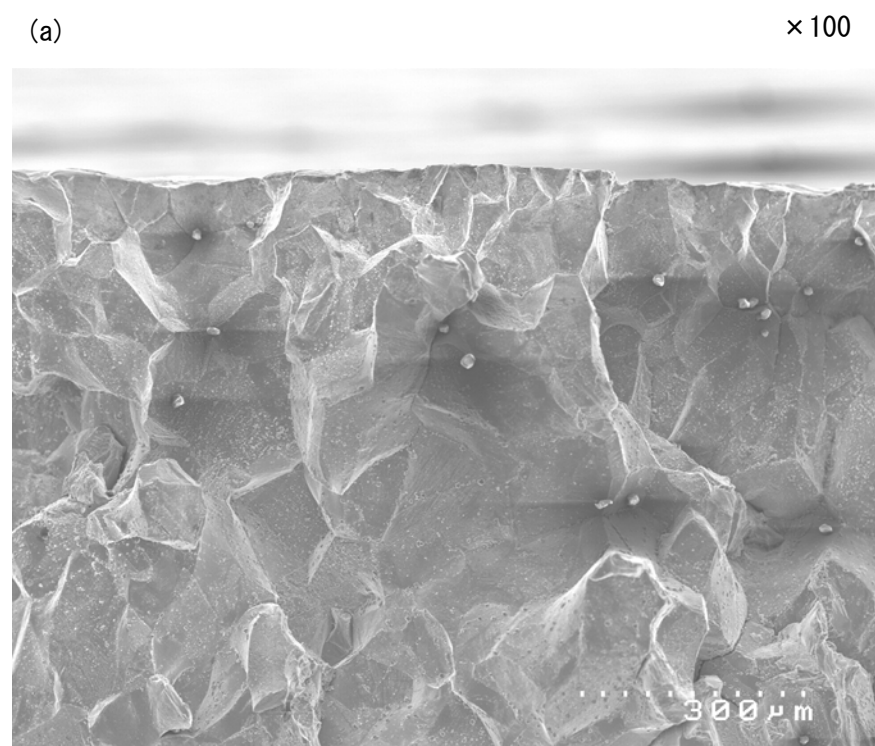
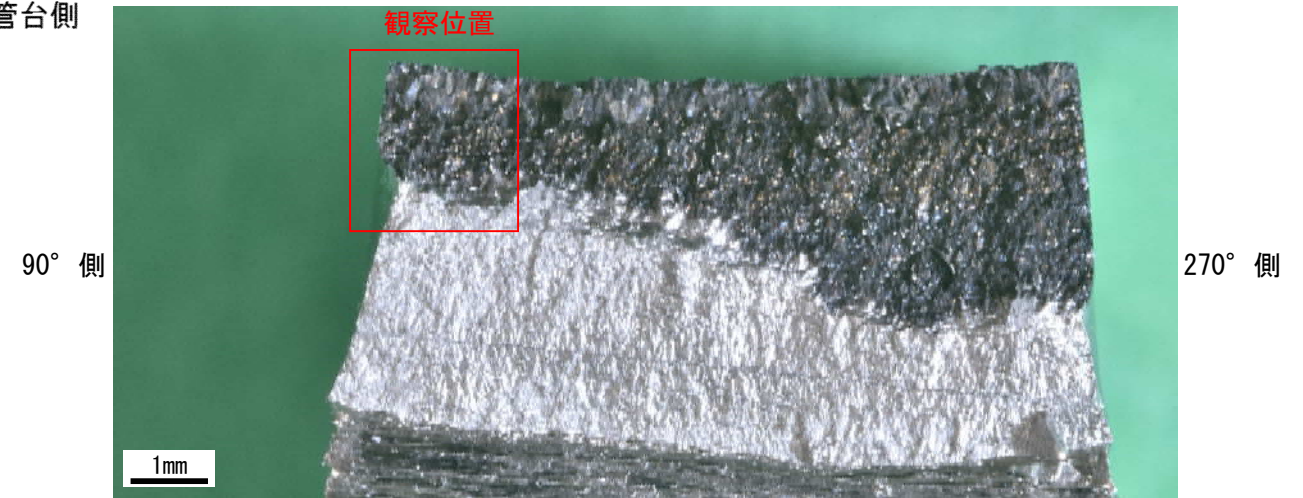
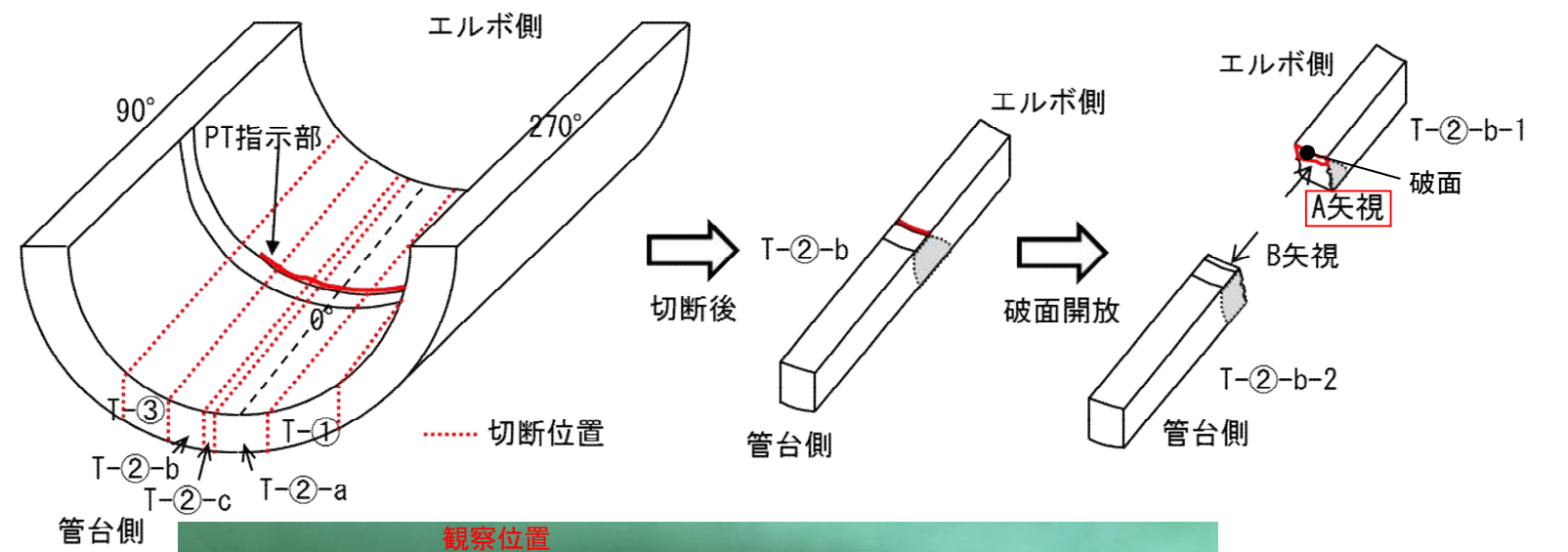
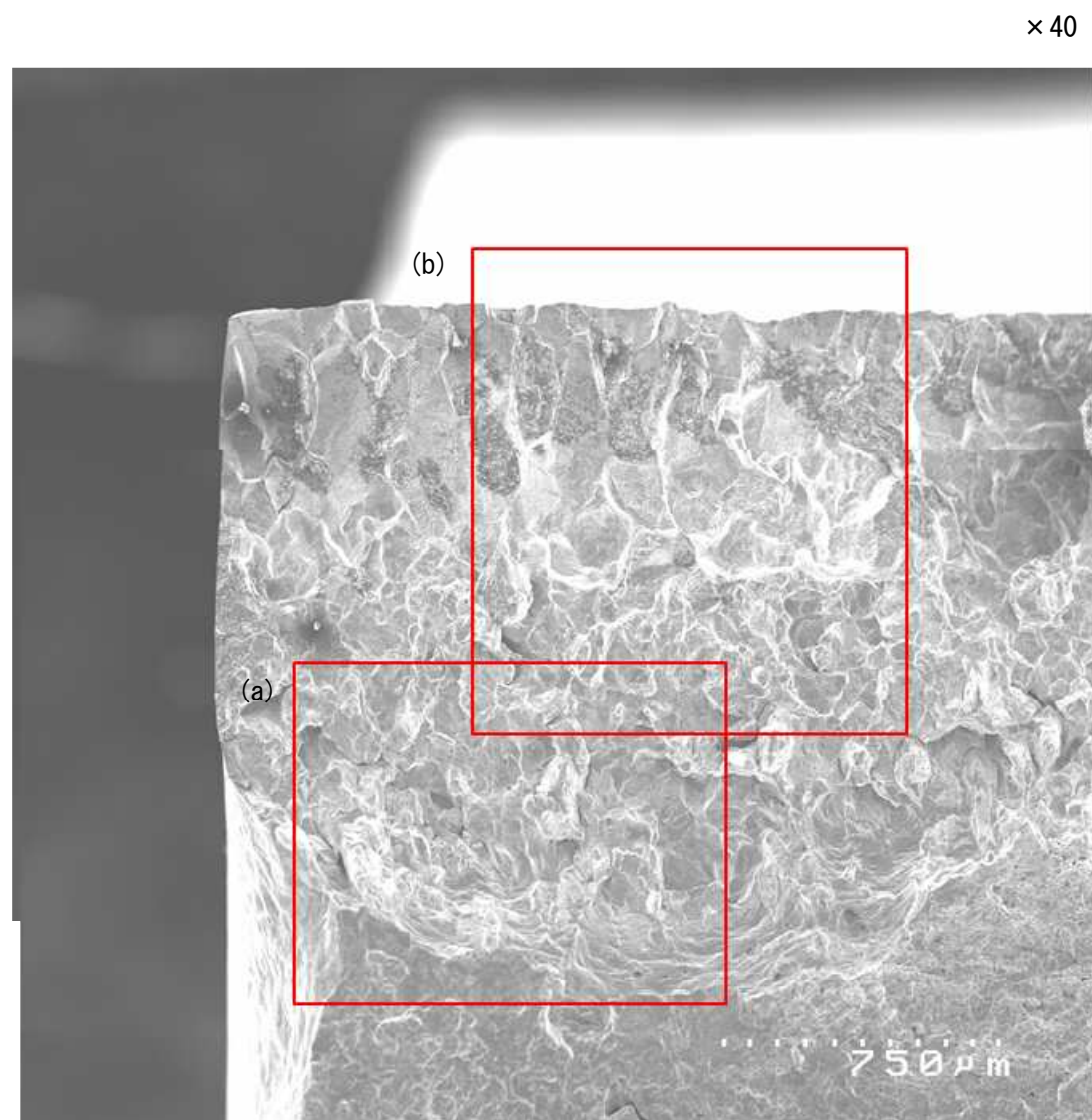


図9 加圧器スプレイライン配管 当該管 SEM 破面観察結果 (T-① A 矢視 視野⑤)



A 矢視 (エルボ側) 破面外観 ×100

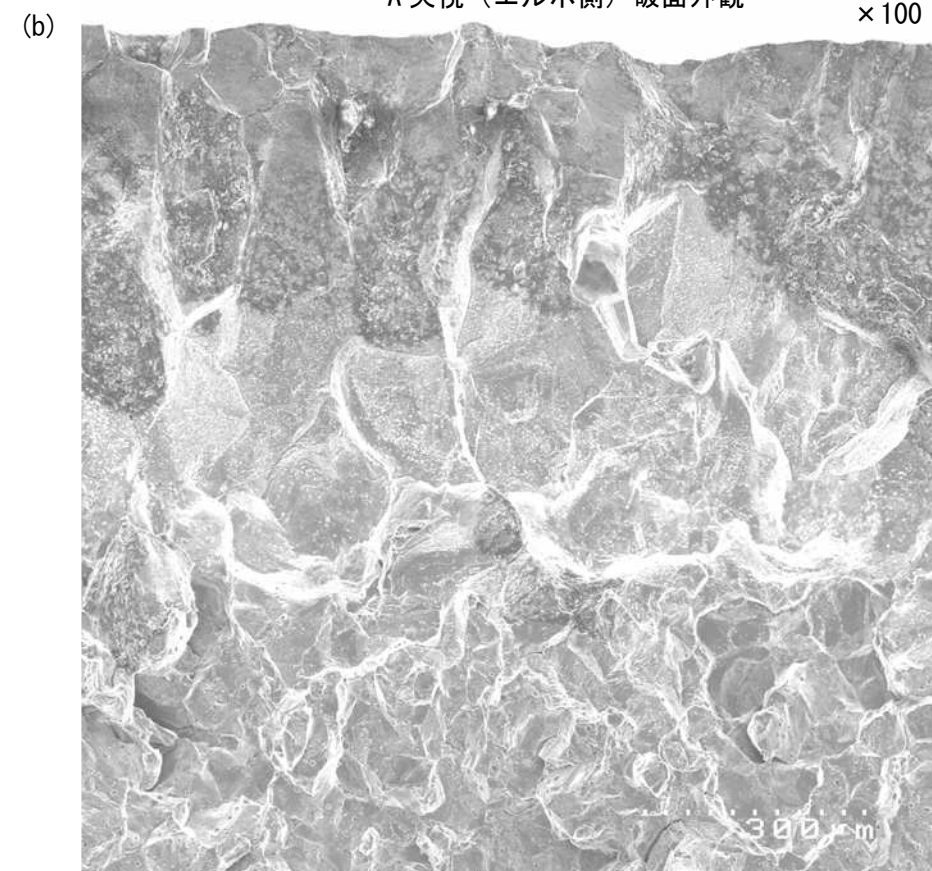
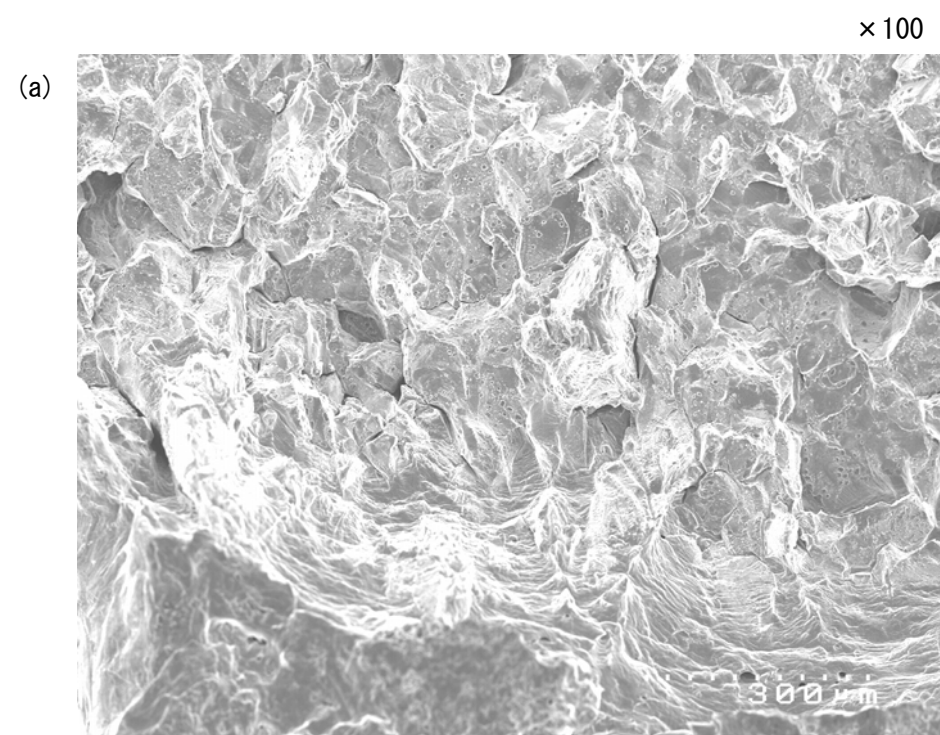


図10 加圧器スプレライン配管 当該管 SEM 破面観察結果 (T-②-b A 矢視 視野①)

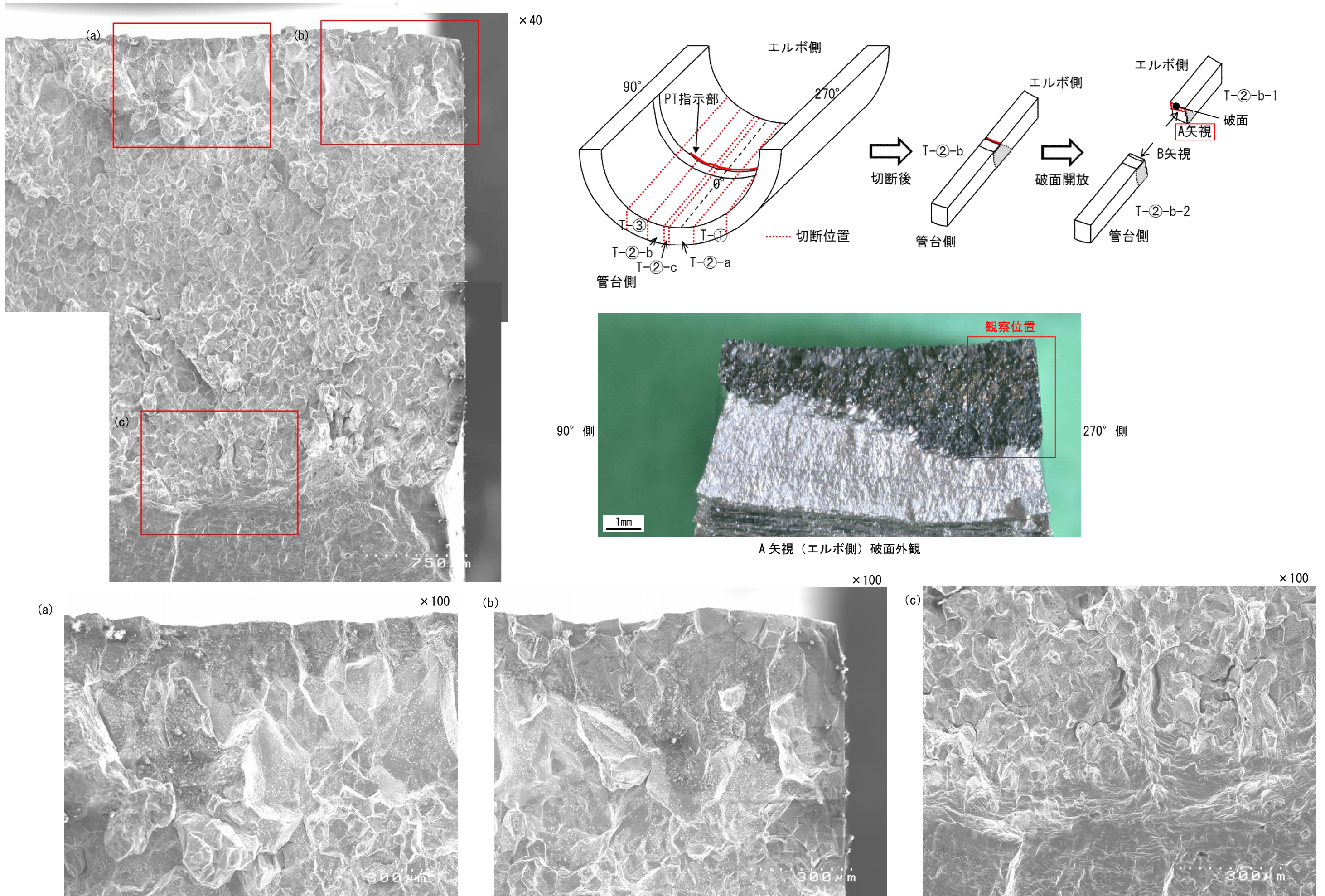


図 11 加圧器スプレライン配管 当該管 SEM 破面観察結果 (T-2-b A 矢視 視野②)

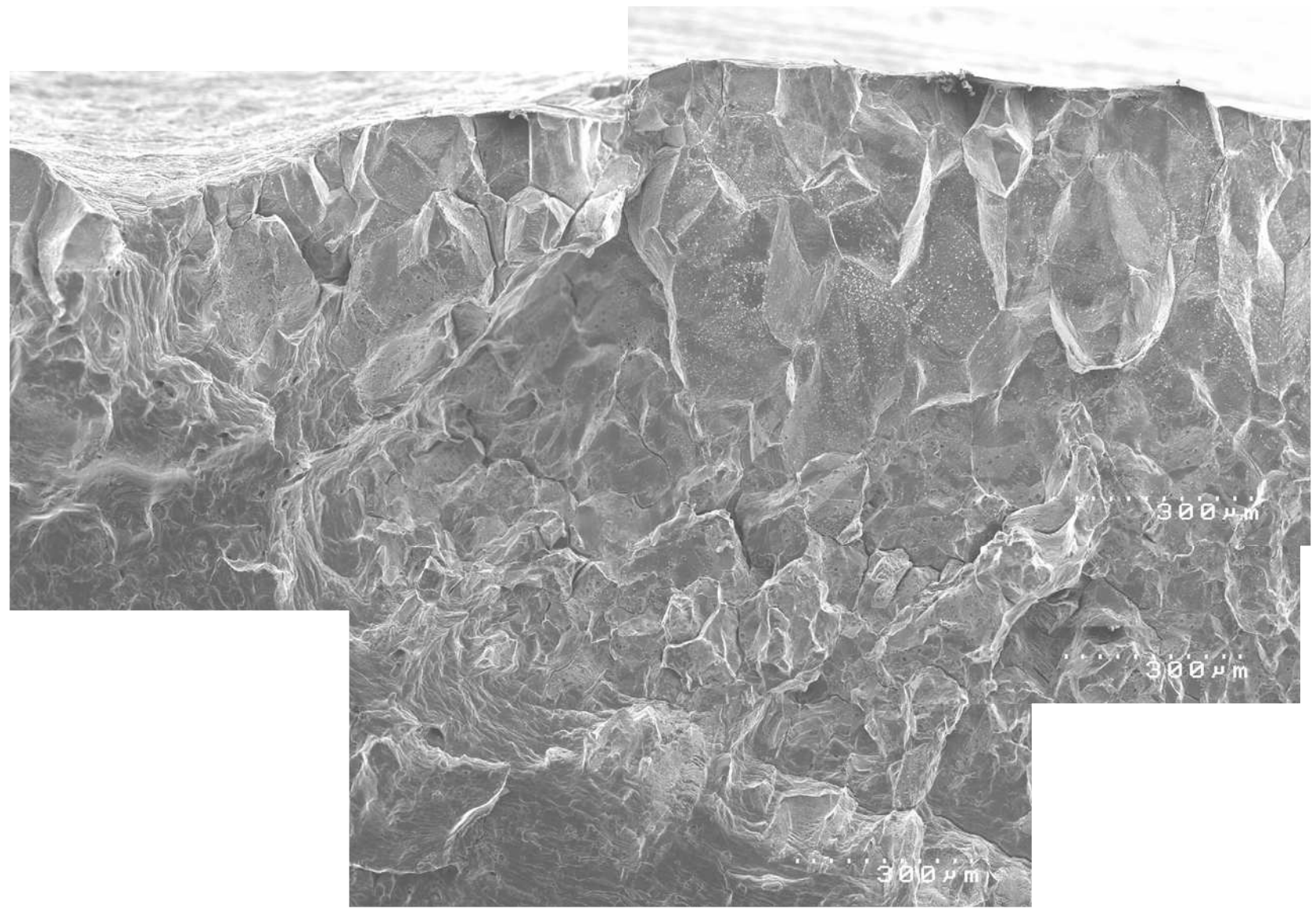
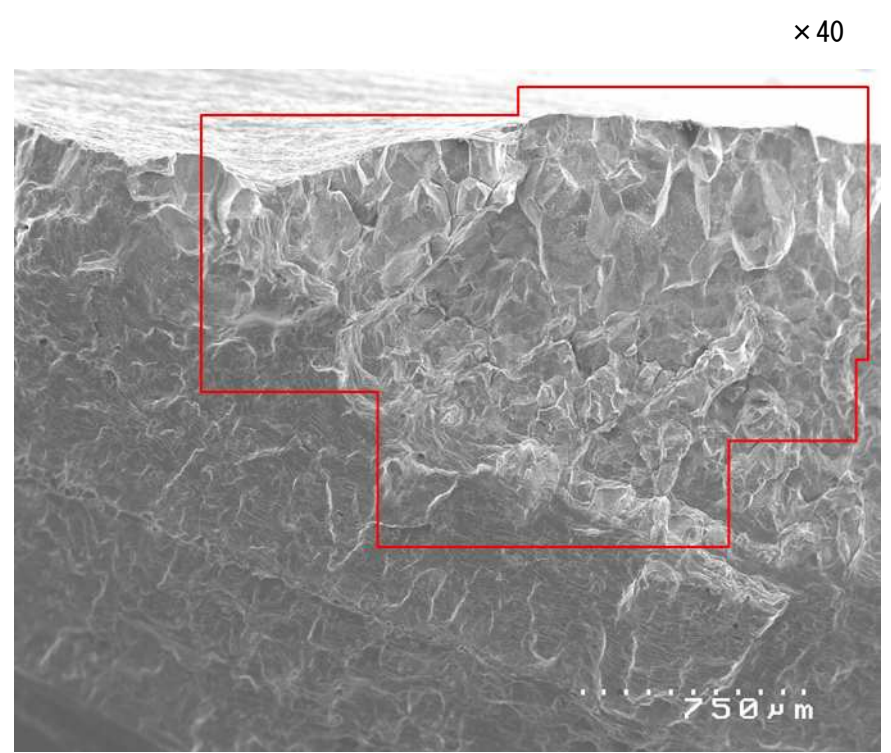
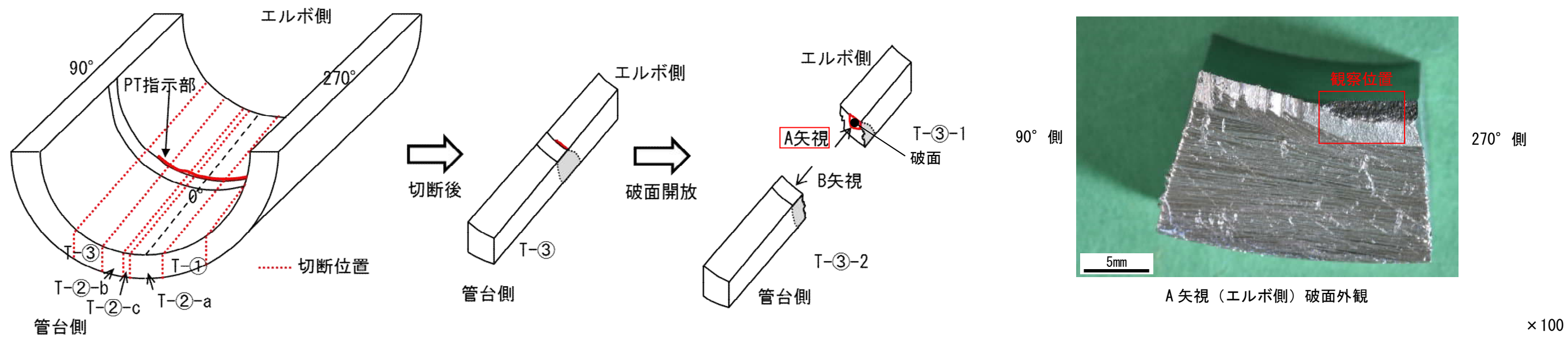


図 12 加圧器スプレライン配管 当該管 SEM 破面観察結果 (T-3 A 矢視 視野①)

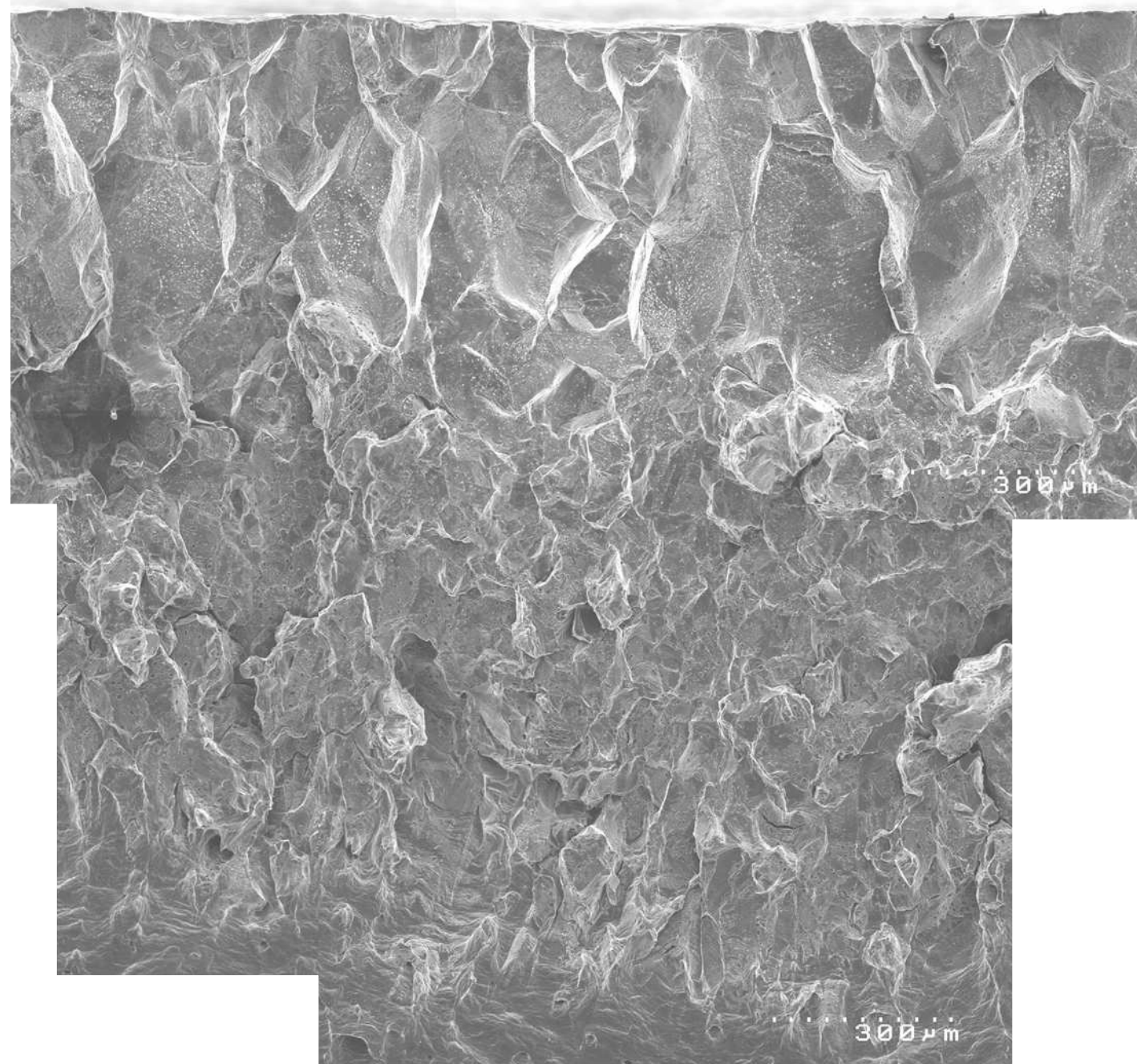
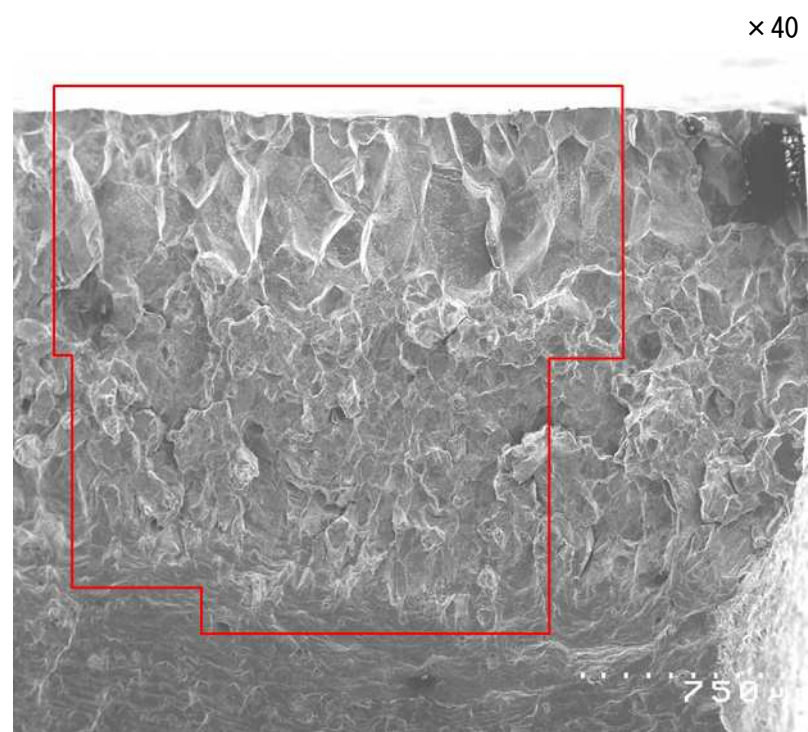
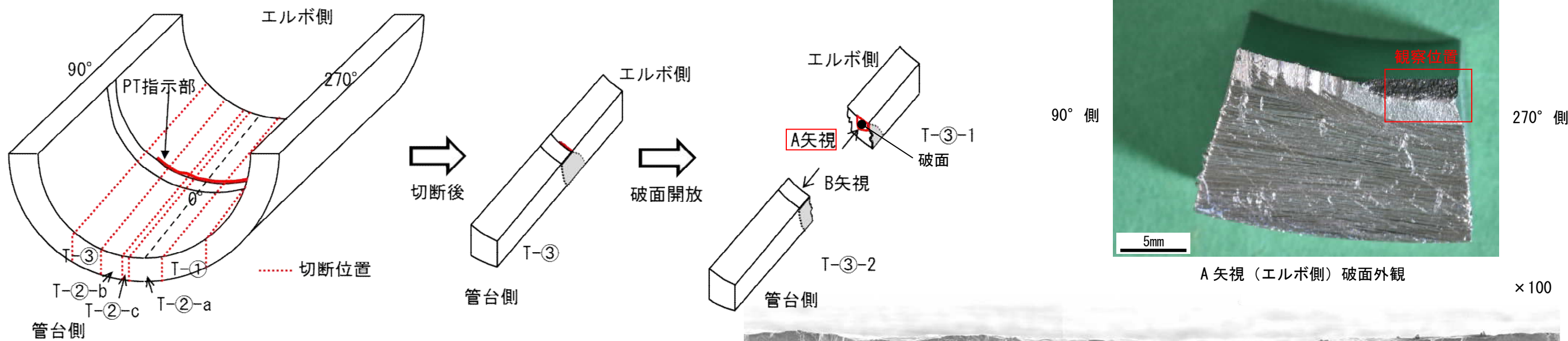


図13 加圧器スプレライン配管 当該管 SEM 破面観察結果 (T-3 A 矢視 視野②)