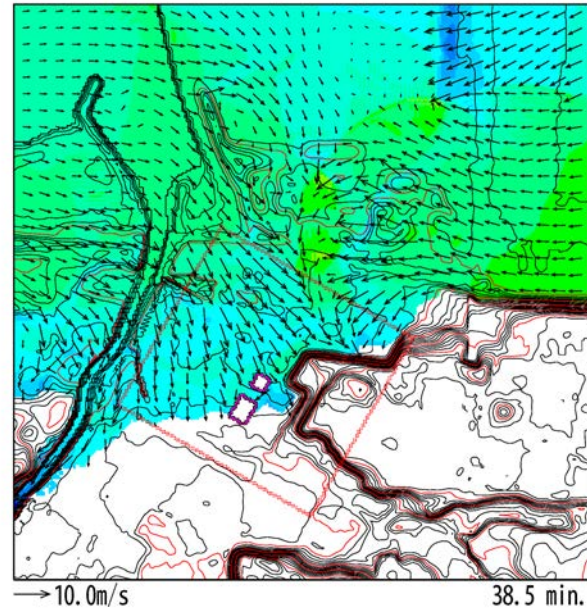
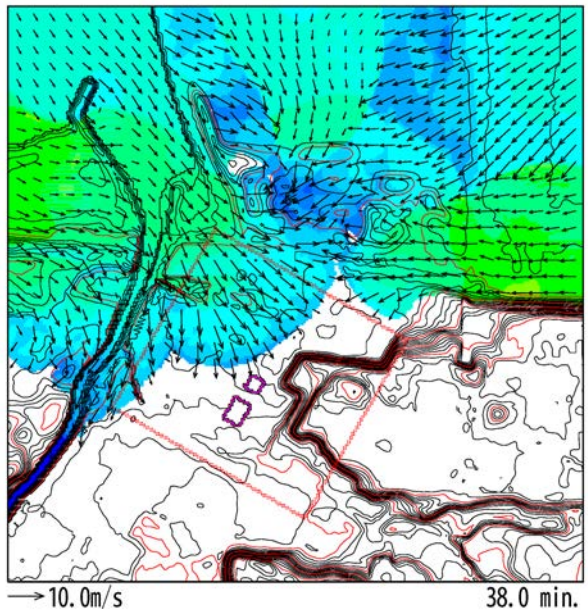
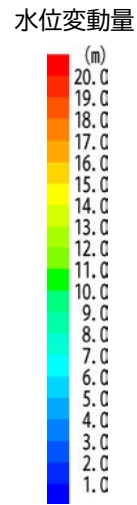
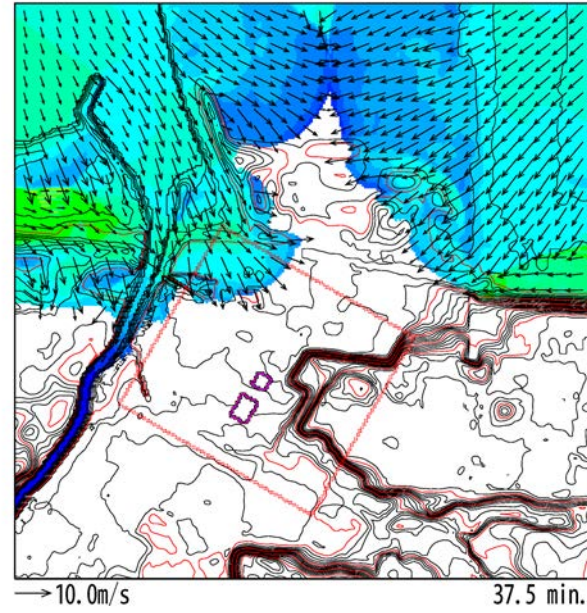
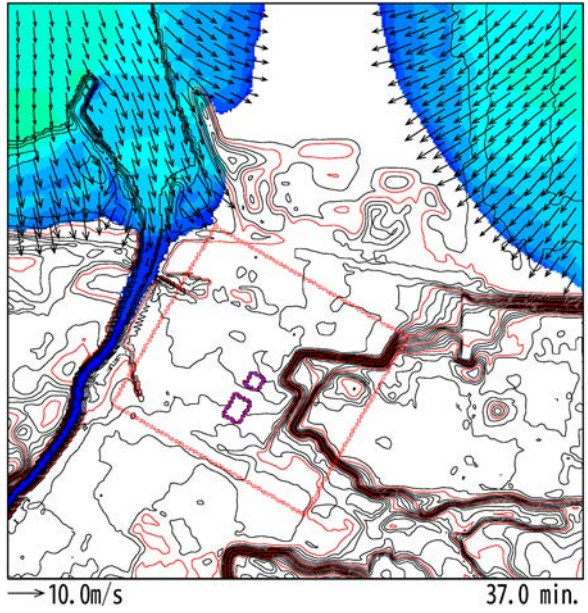
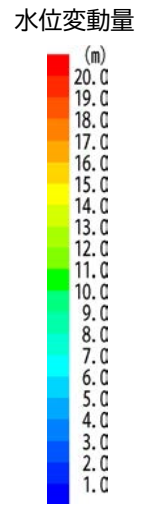
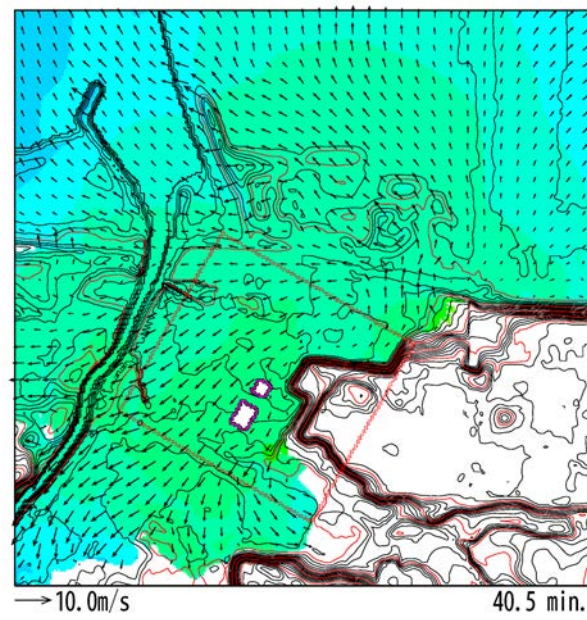
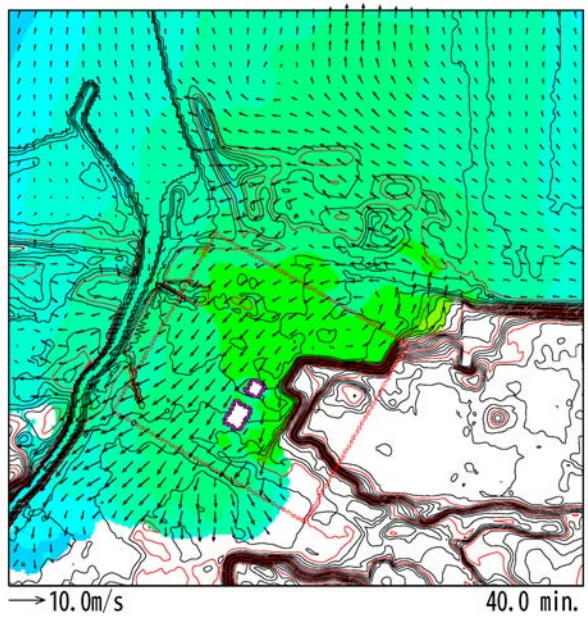
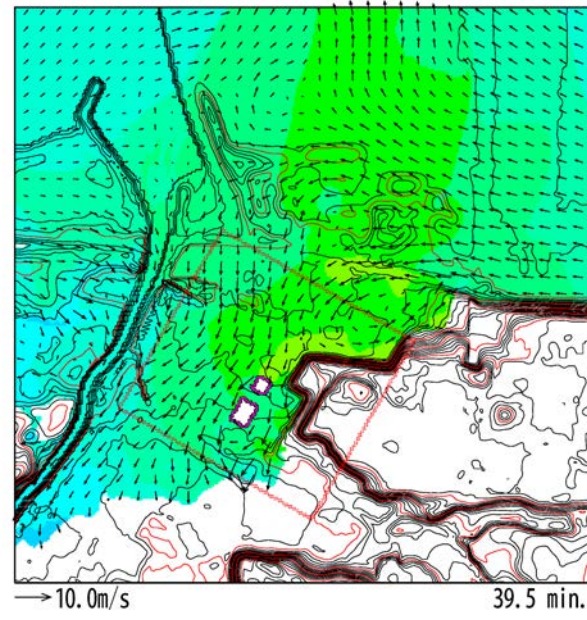
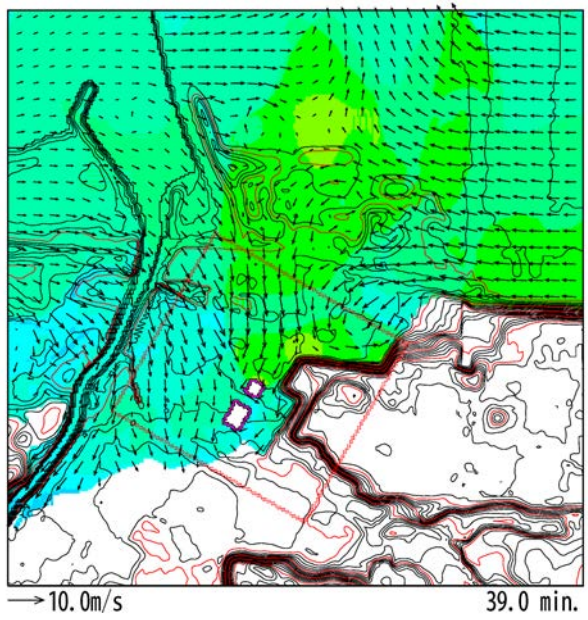


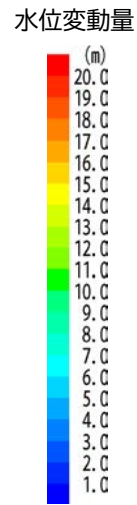
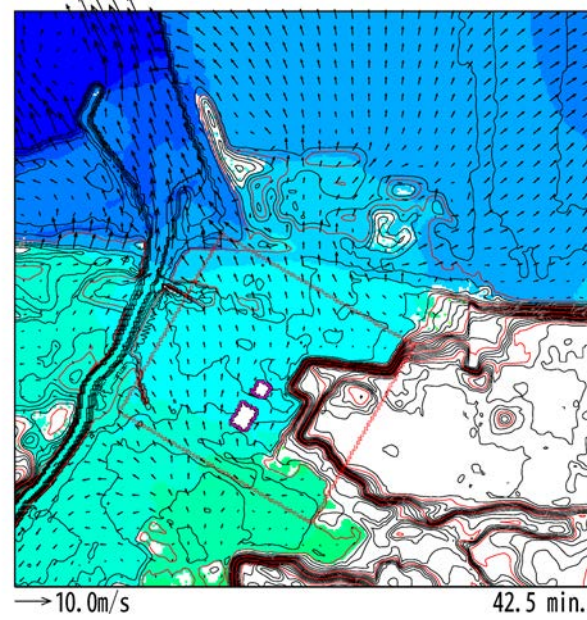
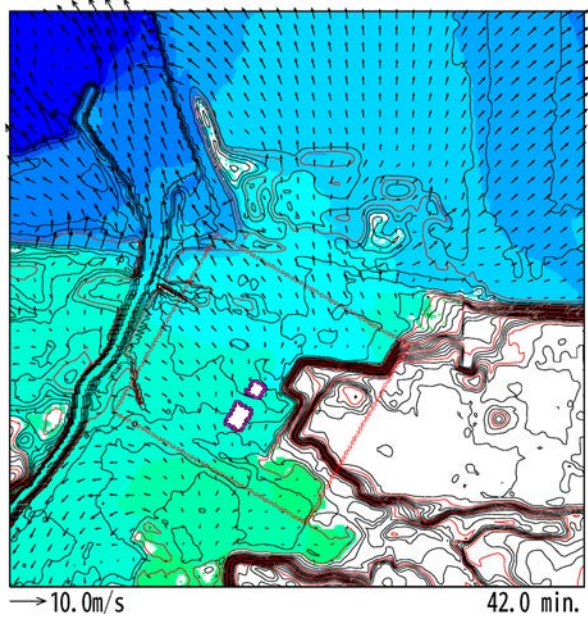
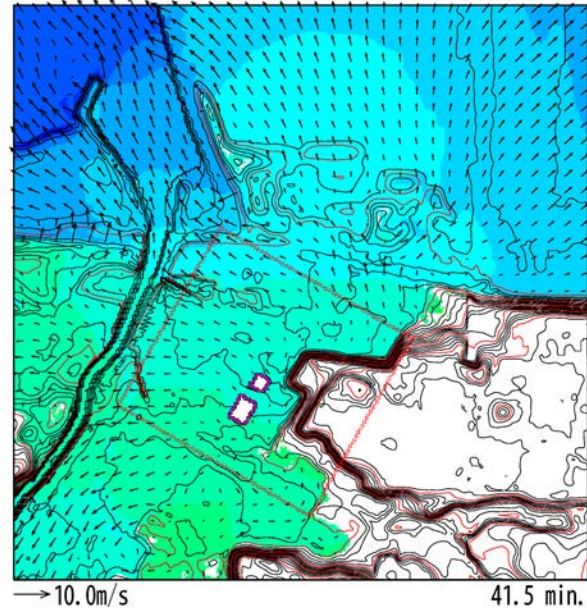
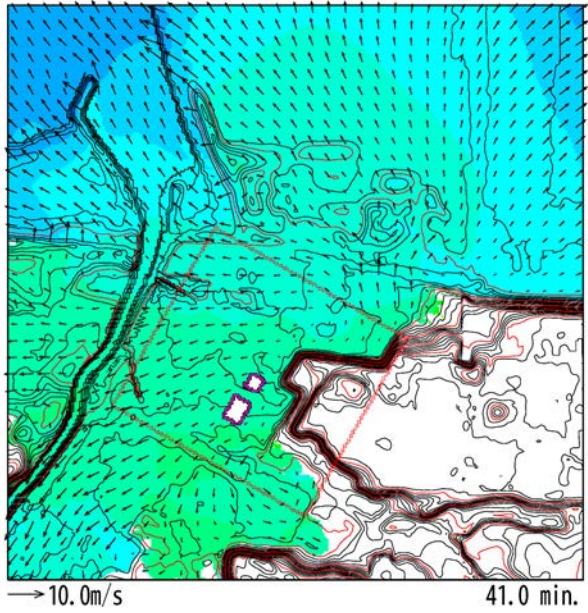
津波遡上の経時変化(水位・流向・流速) 37min~38.5min



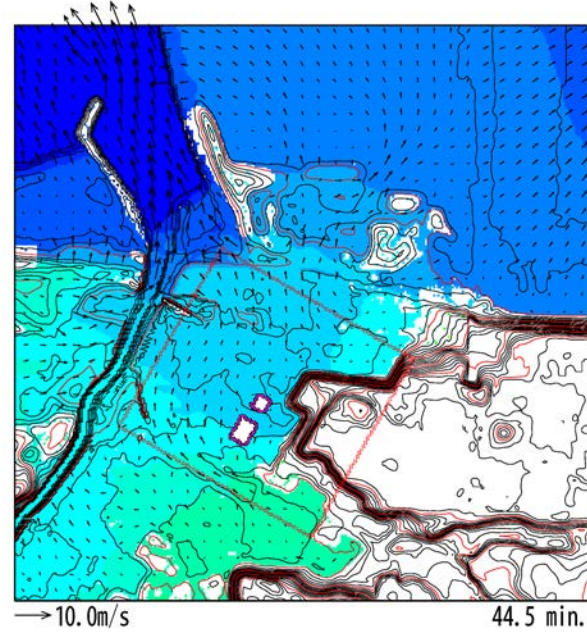
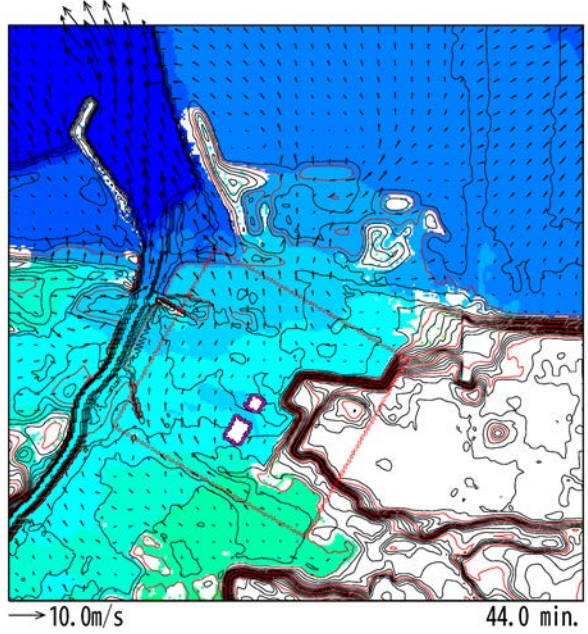
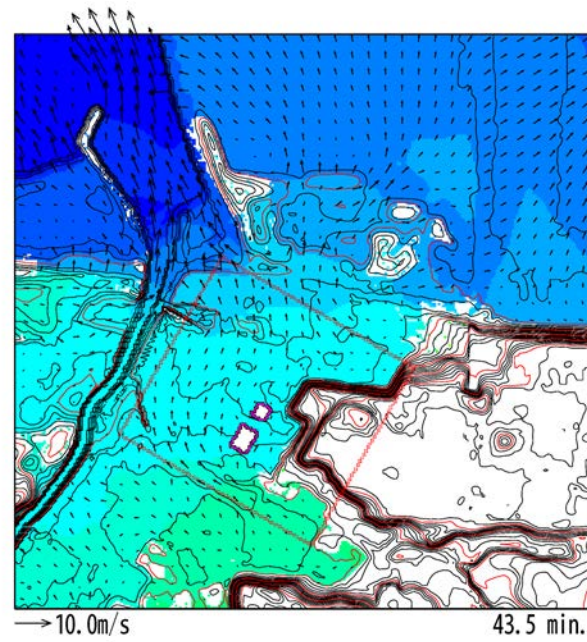
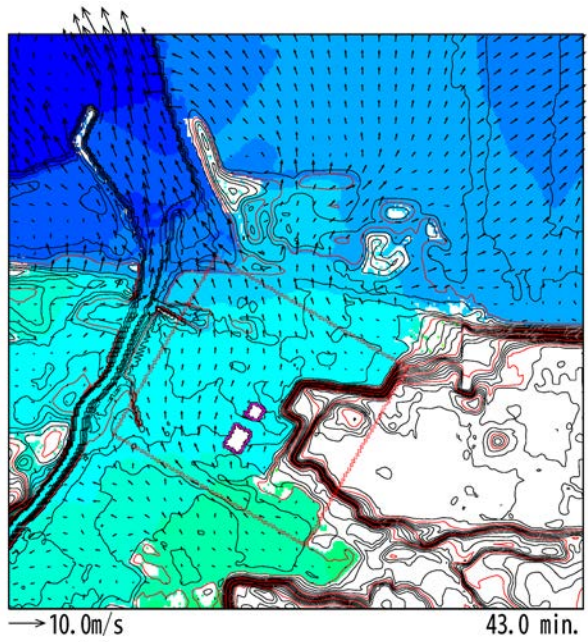
津波遡上の経時変化(水位・流向・流速) 39min~40.5min



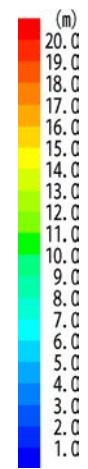
津波遡上の経時変化(水位・流向・流速) 41min~42.5min



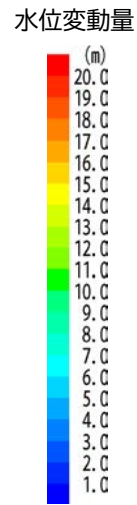
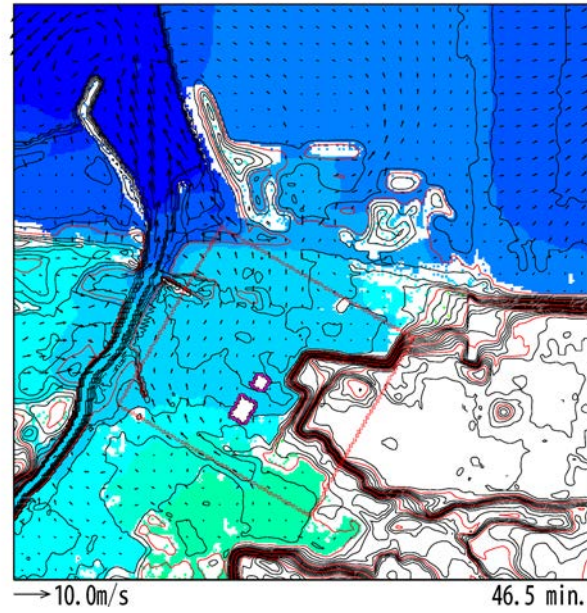
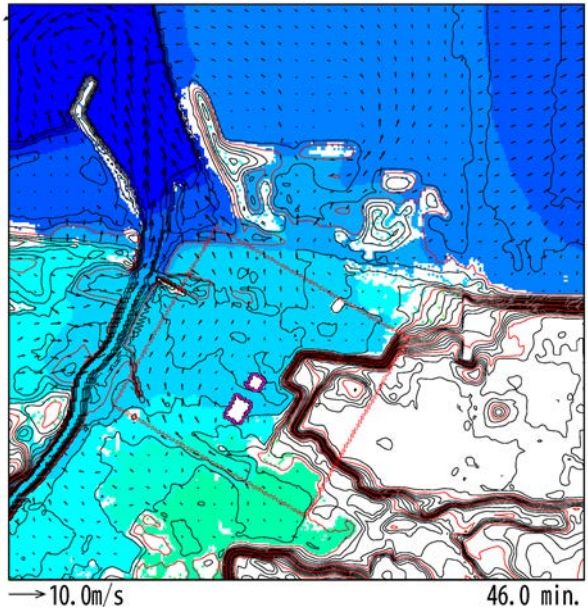
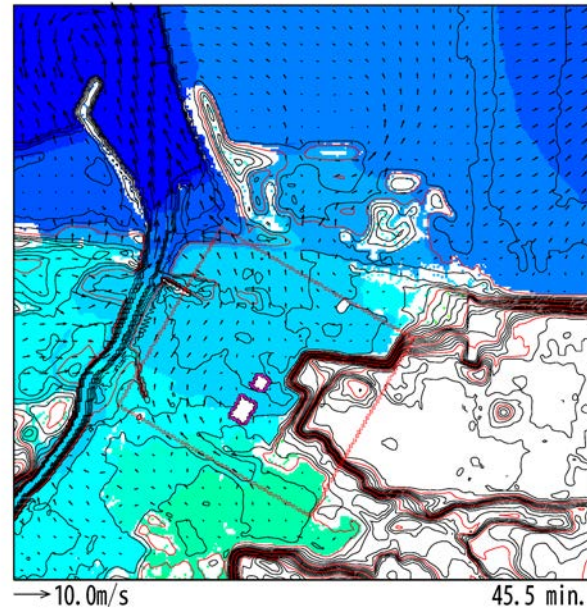
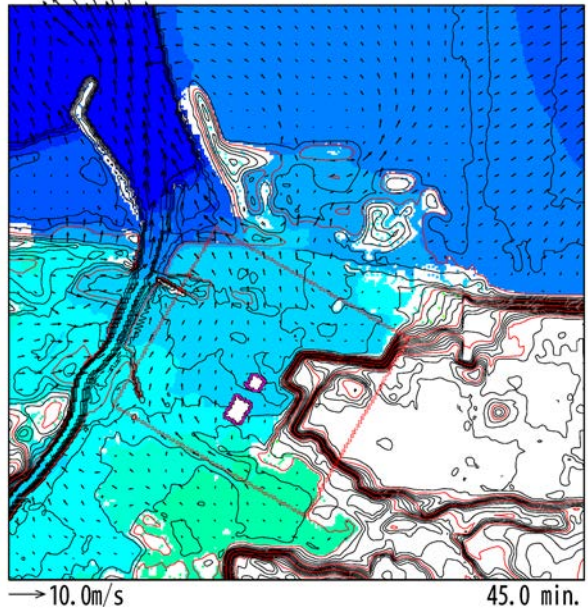
津波遡上の経時変化(水位・流向・流速) 43min~44.5min



水位変動量



津波遡上の経時変化(水位・流向・流速) 45min~46.5min



津波遡上の経時変化(水位・流向・流速) 47min~48.5min

